



*CREATING LASTING MEMORIES
AND UNFORGETTABLE EXPERIENCES*

HOLIDAY HOMES AND LODGES

New 2020 Collection

*CREATING LASTING MEMORIES AND
UNFORGETTABLE EXPERIENCES*

HOLIDAY HOMES AND LODGES

New 2020 Collection

An amazing holiday you will never forget, a family adventure like no other? Choosing a holiday home should be the start of an exciting voyage. For over 30 years the Atlas brand has led the way in holiday home design. Driven by strong interiors and conceptual design cues, structural integrity and a reputation for delivering a high quality product has established Atlas as a market leader.

The ranges feature contemporary fabrics, stylish fittings and an array of practical features, all complemented by stunning exterior appearances ensuring that we have something to suit all tastes and budgets.

Because the little things matter, our portfolio of holiday homes offers a handpicked and bespoke selection of some of the finest products.

Each and every model is handcrafted from our head office and manufacturing facility in Hull where meticulous care and attention is taken to ensure that you get the absolute best from your holiday home to enable you to create memories and have unforgettable experiences that are more than simply holidays!

Contents

Introduction	2
2020 Lodge Collection	7
2020 Holiday Home Collection	33
Standard Features and Options	86
Dimensions	88
Bed sizes	89
Exterior Cladding Options	90
Warranty	92
Ultrawarm Insulation	94
Atlas Main Dealers	95





HANDMADE IS FOREVER NOT JUST FOR NOW...



At Atlas we pride ourselves on delivering first-class products and first-class service.

Designed from the outset with you in mind, at Atlas we work together to ensure that you receive the best possible holiday home in every way, constructed to the highest standards of design, character and finish.

With a keen eye for detail, the Atlas team takes inspiration from innovative construction ideas to generate practical and beautiful homes that enable you to make your holiday experiences complete.

High quality authentic materials and exquisite hand craftsmanship are the staples of our manufacturing process.

We are very proud of the quality of our work and we genuinely enjoy what we do. What matters is the craft and attention that we bring to each project.

With an extensive range of holiday homes and lodges, you're sure to discover the perfect model for you and your family here at Atlas!

THE HOME YOU'VE
ALWAYS DREAMED
ABOUT





2020 LODGE COLLECTION

Leading the way in design and build

The very highest build quality, stunning exteriors and beautifully appointed interiors – you're guaranteed to be able to find your dream lodge in the 2020 collection.

At Atlas we understand that buying a holiday home is an investment, so we only build lodges that will exceed your expectations. From the moment you take ownership of your Atlas lodge, you will start creating memories to last a lifetime.

It's just like being at home

With a long-established reputation for outstanding quality, each lodge features a handpicked and bespoke selection of some of the finest contemporary fabrics, stylish fittings and equipment as standard. And because the little things can make all the difference to your stay, optional extras including American style fridges and wine chillers make Atlas lodges truly a home from home experience.



LABURNUM LODGE

8



DEBONAIR LODGE

12



LILAC LODGE

16



AZALEA LODGE

20



OVATION LODGE

24



SHERWOOD LODGE

28

LABURNUM LODGE 3



The Atlas Laburnum Lodge boasts sophistication with its bespoke design, making it a truly unique model.

The Laburnum Lodge houses a sleek and modern design within an open plan living space. The mixture of tones creates a holiday home that exudes elegance and luxury.

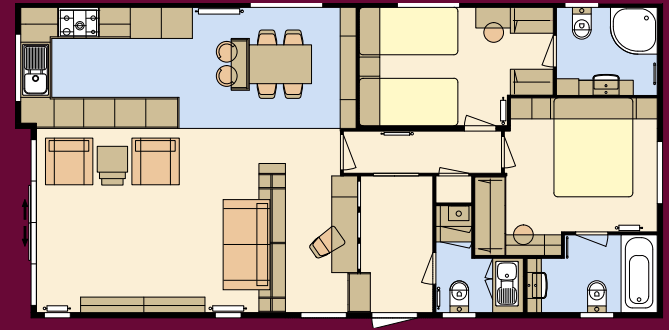


Model illustrated 40 x 20 – 2 bedroom. Duvets, pillows, bedrunner, TV, DVD player, and all other ornaments are for display only.



LABURNUM LODGE 3





Sliding Patio Doors

40 x 20 - 2 bedroom/4 berth

STANDARD FEATURE HIGHLIGHTS

- Fully galvanised chassis
- Central heating
- PVC double glazing
- Extra insulation
- Velux® roof light with blind to dining area
- Integrated oven and grill
- 5 Burner gas hob with electric ignition
- Profile glass extractor
- Integrated microwave
- Integrated fridge freezer
- Integrated dishwasher
- Shower over bath with feature tile effect wet wall and concertina bath screen
- 2 en-suites, one with bath
- Utility room complete with sink, storage cupboard and plumbing with space for free standing appliance
- Unique study/games area with study chair and feature spotlights
- Soft close hinges to doors and drawers throughout
- Front double sliding patio doors including 2 downlighters
- Twin lit exterior light (wall wash effect)
- Nest of occasional tables
- USB sockets to bedrooms and study area
- Low energy lighting
- Free standing settee and armchairs with scatter cushions
- Free standing marble effect dining table with sprung chairs

- Marble effect breakfast bar and stools
- TV points to bedrooms, dinette and lounge (lounge TV point is supplied with a pull out/swivel TV bracket, not fitted, suitable for up to 42" TV)
- Rigid PVC exterior finish complete with exterior feature panel and graphite windows and doors
- Duvet covers/pillowcases for all bedrooms and runner and scatter cushions to master bedroom

POPULAR SELECTED OPTIONS

- Upgrade to BS3632:2015 Residential Standard
- Environmental colours, Canexel or timber cladding options
- 300mm wine cooler for 12 bottles
- 2 seater settee in place of 2 armchairs
- Free standing washing machine or washer/dryer to utility room
- Gas strut lift up bed base to master bedroom
- Pull out bed to lounge settee
- Shower cubicle in lieu of bath
- LED lighting in raised floor dining area riser
- De-luxe bedding set (see pages 86-87)

DEBONAIR LODGE 2



The stunning Atlas Debonair Lodge really takes your breath away – featuring the highest specification as standard.

The Debonair Lodge sets a new benchmark for luxury and sophistication. Built to residential specification as standard, this is a lodge to relax in and a home to be envied.

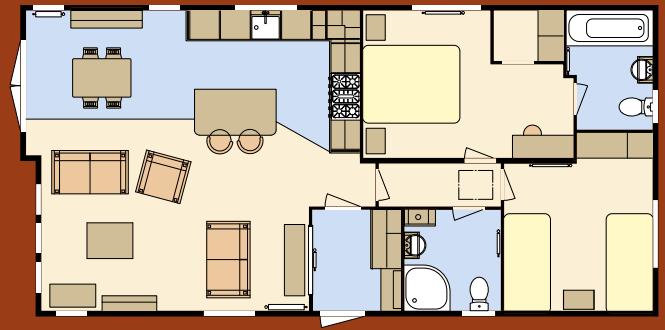


Model illustrated 40 x 20 – 2 bedroom. Duvets, pillows, bedrunner, TV, DVD player, and all other ornaments are for display only.



DEBONAIR LODGE 2





Front French Doors

40 x 20 – 2 bedroom/4 berth

STANDARD FEATURE HIGHLIGHTS

- Central heating and towel radiator
- PVC double glazing
- Extra insulation
- Tongue and groove feature ceiling
- BS3632:2015 Residential Standard
- Front French doors
- Sockets with USB port
- Exterior light
- Low energy lighting
- Full size bath
- TV points to master and twin bedrooms complete with signal booster
- Electric coal effect lounge fire
- Walk in wardrobe
- Extractor fan to main shower/bathroom and en-suite
- Divan beds to all bedrooms
- Free standing range cooker
- Fully galvanised chassis
- Light grey feather edge cladding
- Free standing dining table and chairs
- TV point above fire
- Side by side integrated fridge and freezer
- Shower over bath with wet wall and concertina bath screen
- Integrated microwave
- Integrated dishwasher

POPULAR SELECTED OPTIONS

- Pull out bed to lounge settee
- Environmental colours, Canexel or timber cladding options
- Shower cubicle in lieu of bath where bath is standard
- 300mm wine cooler for 12 bottles
- Integrated washer or washer/dryer
- Matching lounge sofa stool
- Extra dining chairs
- Standard or de-luxe bedding sets

Please see our matrix at the back of the brochure for a comprehensive list of options.

LILAC LODGE 10



The Atlas Lilac Lodge is the ultimate in affordable luxury continuing to hold its place in the competitive market with its home from home feel.

With all the space you need and just the right amount of cosiness, this holiday home really is perfect for the whole family.



Model illustrated 40 x 20 - 2 bedroom, Duvets, pillows, bedrunner, TV, DVD player, and all other ornaments are for display only.



LILAC LODGE 10





STANDARD FEATURE HIGHLIGHTS

- Central heating and towel radiator
- PVC double glazing
- Extra insulation
- Front French doors
- Sockets with USB port
- Exterior light
- Low energy lighting
- Bath in the two bedroom models
- TV points to master and twin bedrooms complete with signal booster
- Glass fronted flame effect lounge fire
- Walk in wardrobe in the two bedroom models
- Extractor fan to main shower/bathroom and en-suite
- Divan beds to all bedrooms
- High level gas oven and grill with electric ignition and 4 burner hob with electric cooker extractor hood
- Fully galvanised chassis
- Vinyl cladding
- Appliance shelf and socket
- Free standing dining table and chairs
- TV point above fire
- Integrated fridge freezer
- Shower over bath with wet wall and concertina bath screen

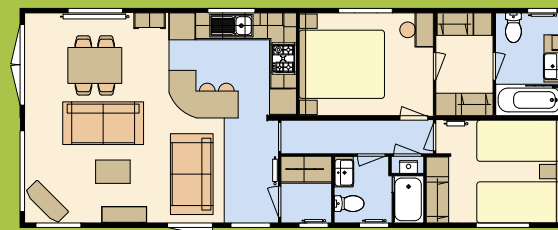
LUXURY PACK CONSISTING OF:

- Coffee table
- Integrated microwave
- Integrated dishwasher
- Integrated washing machine
- Voiles to bedrooms
- Bedroom scatter cushions
- Duvet covers and pillowcases to all bedrooms

POPULAR SELECTED OPTIONS

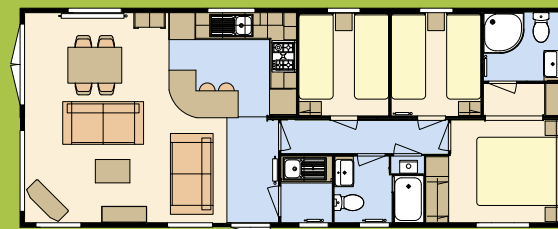
- Pull out bed to lounge settee
- Environmental colours, rigid PVC, Canexel or timber cladding options
- Shower cubicle in lieu of bath where bath is standard
- 300mm wine cooler for 12 bottles
- Upgrade to washer/dryer
- 3 seater settee in place of 2 seater
- 2 armchairs in place of 2 seater settee
- Single additional armchair
- Matching lounge sofa stool
- Extra dining chairs
- WC in utility room
- Front bay window to front elevation
*(only available to 20' models)
- De-luxe bedding set (see pages 86-87)
- Downlighters to front eaves
- Upgrade to BS3632:2015 Residential Standard
- One freestanding full size appliance to utility room
- Tongue and groove feature ceiling

Please see our matrix at the back of the brochure for a comprehensive list of options.



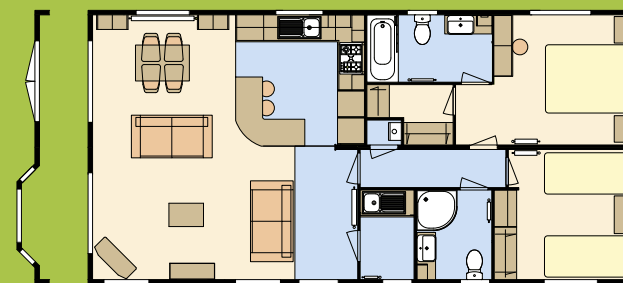
Front French Doors

40 x 16 – 2 bedroom/4 berth



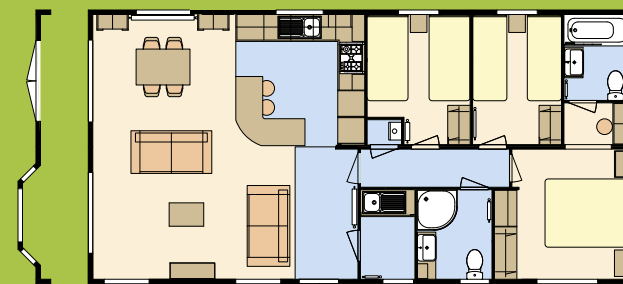
Front French Doors

40 x 16 – 3 bedroom/6 berth



Optional bay window

40 x 20 – 2 bedroom/4 berth



Optional bay window

40 x 20 – 3 bedroom/6 berth

AZALEA LODGE 2



The very attractive Atlas Azalea Lodge has strikingly good looks to the exterior and fabulous interior specifications. This lodge is top of the range and built to residential specification as standard. The Atlas Azalea Lodge is presented with many beautiful finishing touches which feature exceptional attention to detail. This lodge has everything you need to make this holiday home – a home.

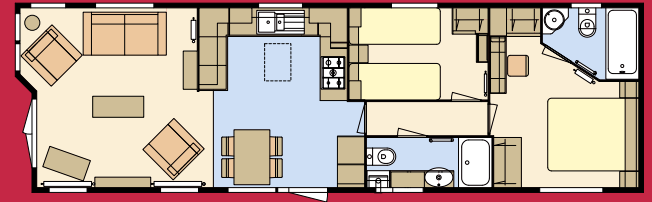


Model illustrated 43 x 13 – 2 bedroom. Duvets, pillows, bedrunner, TV, DVD player, and all other ornaments are for display only.



AZALEA LODGE 2





Front French Doors

43 x 13 – 2 bedroom/4 berth

STANDARD FEATURE HIGHLIGHTS

- Built to BS3632:2015 Residential Standard
- Central heating and towel radiator
- PVC double glazing
- Sockets with USB port
- Stone rigid PVC exterior finish complete with graphite windows and doors
- Front French doors including 2 downlighters
- Exterior light
- Low energy lighting
- Gas oven and grill with electric ignition and electric cooker extractor hood with 5 ring hob and wok burner
- Fully galvanised chassis
- Free standing suite with scatter cushions
- Free standing dining table and chairs
- TV point to master bedroom complete with signal booster
- Coffee table
- Vertical blinds to front aspect
- Soft close hinges throughout kitchen
- Integrated microwave
- Integrated dishwasher
- Over bed reading lights
- Domestic style interior doors
- En-suite bathroom to master bedroom
- Divan bed to master bedroom
- TV point above fire
- 300mm wine cooler for 12 bottles
- Shower over bath with wet wall and concertina bath screen
- Duvet covers/pillowcases for all bedrooms and runner and scatter cushions to master bedroom
- Integrated upright fridge freezer

POPULAR SELECTED OPTIONS

- Pull out bed to lounge
- Environmental colours, Canexel or timber cladding options
- American style fridge freezer
- Upgrade to washing machine or washer/dryer in lieu of dishwasher
- Washer/dryer in addition to dishwasher
- TV point to twin bedroom
- Shower cubicle in lieu of bath
- De-luxe bedding set (see pages 86–87)

Please see our matrix at the back of the brochure for a comprehensive list of options.

OVATION LODGE 4



The Atlas Ovation Lodge is the next level of luxury and really makes a statement.

The luxurious kitchen and dining area make this home stand out from the crowd with its six-seater dining table. It is a home to entertain and to enjoy those holiday evenings.

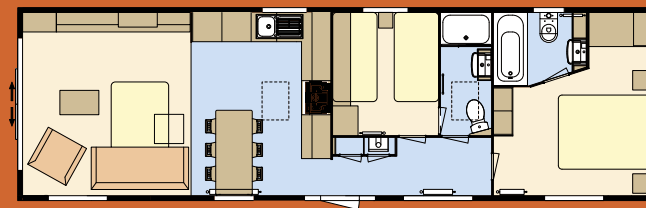


Model illustrated 43 x 13 - 2 bedroom, Duvets, pillows, bedrunner, TV, DVD player, and all other ornaments are for display only



OVATION LODGE 4





43 x 13 – 2 bedroom/6 berth

STANDARD FEATURE HIGHLIGHTS

- Central heating and towel radiator
- PVC double glazing
- Extra insulation
- Front double sliding patio doors including 2 downlighters
- Sockets with USB port
- Exterior light
- Low energy lighting
- TV points to master bedroom
- Coffee table
- Grey rigid PVC exterior finish complete with white windows/doors
- Extractor fan to main shower/bathroom and en-suite
- Bed side designer lights
- Integrated fridge freezer
- Soft close hinges throughout kitchen
- Pre-galvanised chassis
- Duvet covers/pillowcases for all bedrooms and runner and scatter cushions to master bedroom
- Velux® window to kitchen and shower room
- Integrated microwave
- Free standing table and 6 chairs
- High level oven and grill with electric ignition and 5 burner hob
- 3' single beds
- En-suite bath/shower room to both bedrooms
- Feature brick effect walling in kitchen
- Feature electric fire

POPULAR SELECTED OPTIONS

- TV points to twin room complete with signal booster
- TV point above fire in lounge
- Floor lamp
- Front windows in place of doors
- Shower over bath with wet wall and concertina bath screen
- Shower cubicle in lieu of bath
- Tiled shower insert
- Upgrade to BS3632:2015 Residential Standard
- Environmental colours, Canexel or timber cladding options
- Provision for wall mounted TV to lounge
- Two full size appliances
- Pull out bed to lounge
- 300mm wine cooler for 12 bottles
- Fully galvanised chassis
- De-luxe bedding set (see pages 86–87)

Please see our matrix at the back of the brochure for a comprehensive list of options.

SHERWOOD LODGE 5



The Sherwood Lodge has a sleek modern interior with a naturally inviting palette.

At the heart of the home is the large kitchen which has an abundance of work space to prepare meals and entertain.

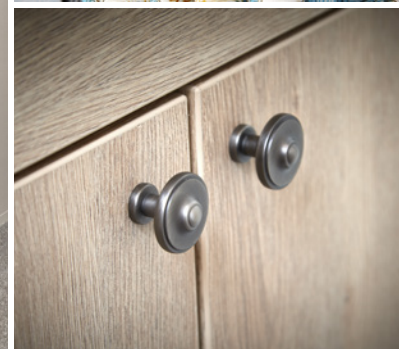
The Sherwood Lodge is the perfect choice for those seeking comfortable luxury in a residential specification holiday home.

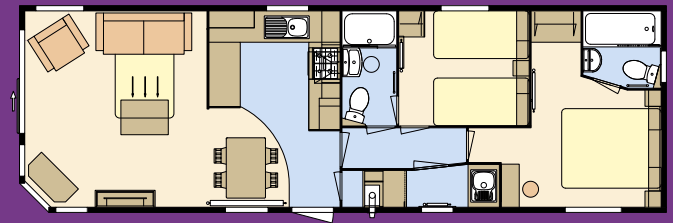


*Model illustrated 40 x 13 - 2 bedroom.
Duvets, pillows, bedrunner, TV, DVD player, and all other ornaments are for display only.*



SHERWOOD LODGE 5





Sliding patio doors

40 x 13 – 2 bedroom/6 berth

STANDARD FEATURE HIGHLIGHTS

- Built to BS3632:2015 Residential Standard
- Central heating
- PVC double glazing
- Pre-galvanised chassis
- Sockets with USB port
- Extractor fan to shower/bathroom and en-suite
- Low energy lighting
- Over bed reading lights
- Free standing suite with pull out bed and scatter cushions
- Free standing dining table and chairs
- Integrated oven and grill with 4 ring hob and electric ignition and electric extractor hood
- Soft close hinges to doors throughout kitchen
- Rigid PVC exterior finish
- Coffee table
- Integrated side by side fridge freezer
- 2 en-suites, one with bath
- Unique utility room complete with sink and storage cupboard
- Front sliding patio doors including 2 downlighters
- Integrated microwave
- Exterior light
- Pull out bed to lounge

POPULAR SELECTED OPTIONS

- TV points to master and twin room complete with signal booster
- TV point above fire in lounge
- Additional feature armchair in lieu of TV cabinet
- Upholstered lounge footstool
- Velux® in place of suntube in shower room
- Velux® in ceiling of kitchen
- Environmental colours, Canexel or timber cladding options
- Free standing washer or washer dryer to utility room
- Integrated slimline dishwasher
- Gas strut lift up bed to master bedroom
- Shower over bath complete with wet wall and concertina bath screen
- Shower cubicle in lieu of bath
- Standard bedding set or de-luxe bedding set (see pages 86–87)
- Upright fridge freezer in lieu of side by side
- Fully galvanised chassis

Please see our matrix at the back of the brochure for a comprehensive list of options.

MAKE THE MOST OF
YOUR LEISURE TIME



2020 HOLIDAY HOME COLLECTION

Creating lasting memories and unforgettable experiences

Whether you're looking for the perfect annual staycation lodge that all the family can enjoy, or a bolthole that's near enough to escape to every weekend, you're bound to find your dream holiday home in the 2020 Atlas collection.



IMAGE

34



STATUS

38



DEBONAIR

42



DEBONAIR ACCESS

46



CHORUS

50



HERITAGE

54



ADVENTURE

58



AMETHYST

62



ONYX

66



MIRAGE

70



FESTIVAL

74



MOONSTONE

78



FLORIDA

82

IMAGE 7

7FT
WALL
HEIGHT



The stunning 2020 Atlas Image is designed with elegance in mind.

The attractive interior is accentuated with its style of sophistication and steadfast specification bringing a real feeling of opulence that will never date, enabling you to live your dreams.



*Model illustrated 41 x 12-6 - 2 bedroom.
Duvets, pillows, bedrunner, TV, DVD player, and all other ornaments are for display only.*

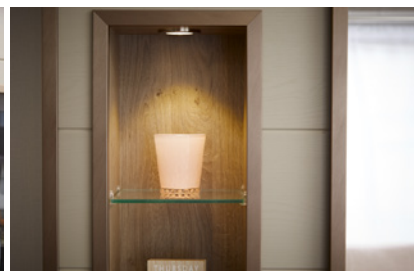
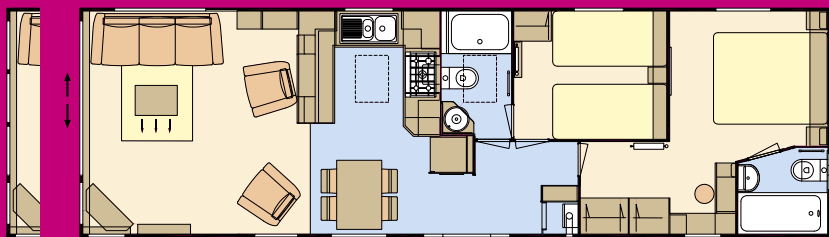


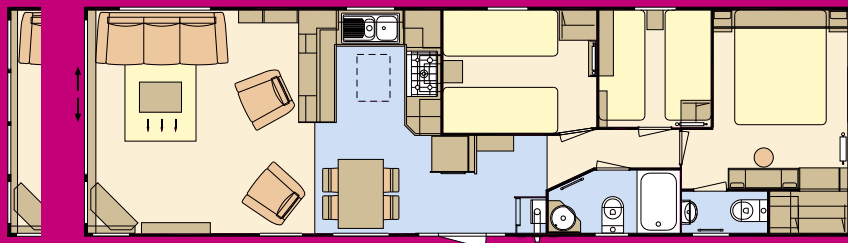
IMAGE 7





Front window option – sliding patio door standard

41 x 12-6 – 2 bedroom/6 berth



Front window option – sliding patio door standard

41 x 12-6 – 3 bedroom/8 berth

STANDARD FEATURE HIGHLIGHTS

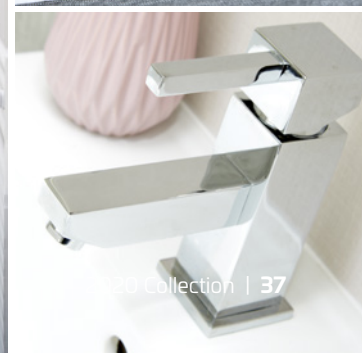
- Central heating and towel radiator
- PVC double glazing
- Extra insulation
- Sockets with USB port
- Low energy lighting
- Free standing suite with pull out bed and scatter cushions
- Free standing dining table and chairs
- Vertical blinds to front aspect
- Gas oven and grill with electric ignition and 5 burner hob with recirculating extractor hood
- Integrated fridge freezer
- Integrated microwave
- Velux® roof light
- Gas strut lift up bed to master bedroom
- TV points to master and twin room complete with signal booster
- En-suite bath/shower room to both bedrooms in 2 bedroom model
- En-suite WC to 3 bedroom model
- 3' single beds in 2 bedroom model only

- Front sliding patio doors including 2 downlighters
- Pre-galvanised chassis
- Coffee table
- Pull out bed to lounge
- Soft close hinges throughout kitchen
- Over bed reading lights
- Duvet covers/pillowcases for all bedrooms and runner and scatter cushions to master bedroom

POPULAR SELECTED OPTIONS

- Shower over bath complete with wet wall and concertina bath screen in 41 x 12-6 – 2 bedroom model
- Shower cubicle in lieu of bath
- TV point above fire in lounge
- Double glazed front windows in lieu of front doors
- One full size integrated appliance
- Fully galvanised chassis
- De-luxe bedding set (see page 86-87)
- Environmental colours, rigid PVC, Canexel or timber cladding options

Please see our matrix at the back of the brochure for a comprehensive list of options.





The ever popular Status is a stand out model within the Atlas range.

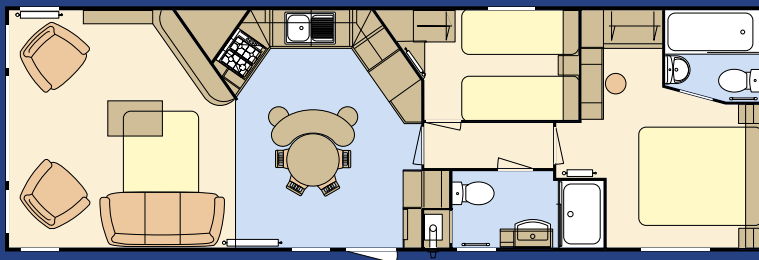
The well designed kitchen breakfast bar is the perfect way to utilise your space, making it the ideal place to eat, entertain and socialise with friends and family.



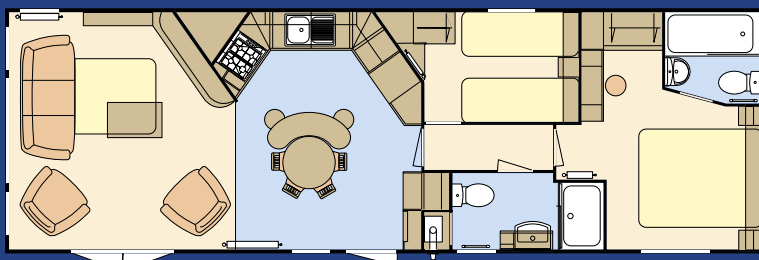
Model illustrated 38 x 12-6 - 2 bedroom.
Duvets, pillows, bedrunner, TV, DVD player, and all other ornaments are for display only.





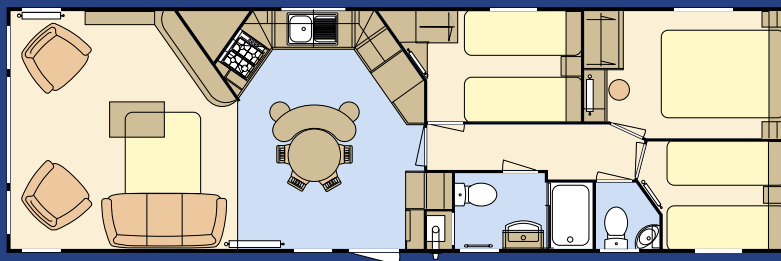


38 x 12-6 – 2 bedroom/6 berth



SFD layout

38 x 12-6 – 2 bedroom/6 berth



39 x 12-6 – 3 bedroom/8 berth

STANDARD FEATURE HIGHLIGHTS

- Free standing suite with 2 swivel chairs and scatter cushions
- Vertical blinds to front aspect
- Island unit to kitchen
- High level gas oven and grill with electric ignition
- Recirculating electric extractor hood
- Sockets with USB port
- Free standing circular table and chairs
- Soft close hinges to doors throughout kitchen and bedrooms
- En-suite bathroom to 2 bedroom model
- Extractor fan to main shower/bathroom
- Pull out bed to lounge settee
- Integrated fridge freezer
- Low energy lighting
- Over bed reading lights
- TV point to master bedroom
- Gas strut metal lift up bed to master bedroom
- Feature electric fire

POPULAR SELECTED OPTIONS

- Central heating with towel radiator
- PVC double glazing
- Extra insulation
- Front French doors including 2 downlighters
- Side French doors
- Integrated microwave
- Pre-galvanised chassis or fully galvanised chassis
- One full size integrated appliance
- Shower over bath complete with wet wall and concertina bath screen in 38 x 12 – 2 bedroom model
- Shower cubicle in lieu of bath
- Standard bedding set or de-luxe bedding set (see pages 86–87)
- Gazunder twin beds
- 2 breakfast bar stools
- Environmental colours, rigid PVC, Canexel or timber cladding options

Please see our matrix at the back of the brochure for a comprehensive list of options.



DEBONAIR 7

7FT
WALL
HEIGHT



The sophisticated Debonair hosts a beautiful blend of traditional features with contemporary finishes making this the epitome of country house living. The warm and cosy tartan fabrics adds a touch of comfort.

The rustic kitchen embodies laid back living with a few unexpected modern elements that mix surprisingly well with utilitarian living.

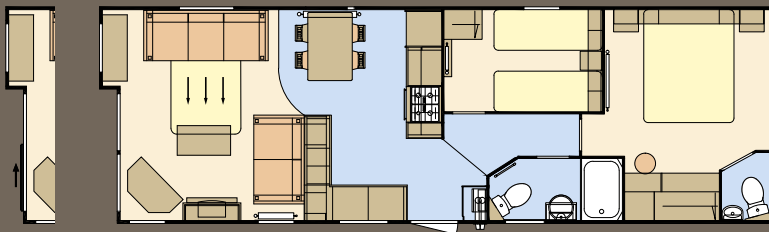


Model illustrated 38 x 12 - 2 bedroom.
Duvets, pillows, bedrunner, TV, DVD player, and all other ornaments are for display only.



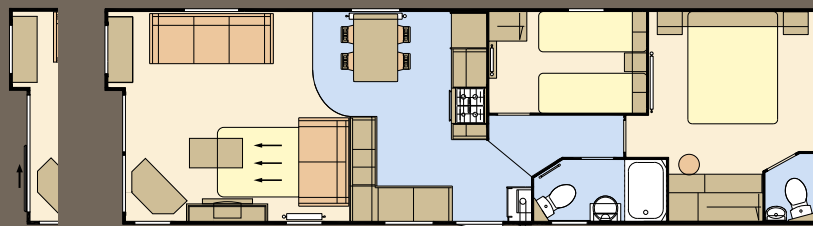
DEBONAIR 7





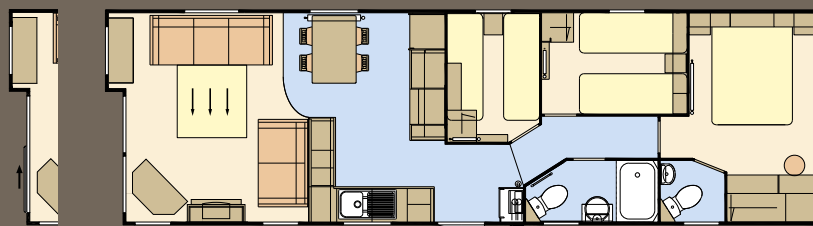
Sliding patio doors

36 x 12 – 2 bedroom/6 berth



Sliding patio doors

38 x 12 – 2 bedroom/6 berth



Sliding patio doors

38 x 12 – 3 bedroom/8 berth

STANDARD FEATURE HIGHLIGHTS

- Free standing suite complete with scatter cushions
- Free standing table and chairs
- Pull out bed to lounge
- Integrated oven and grill with 4 ring hob and electric ignition
- Low energy lighting
- Sockets with USB port
- Recirculating electric cooker hood
- Over bed designer reading lights
- En-suite WC to master bedroom
- Integrated fridge freezer
- Exterior fan to main bathroom/shower room
- Appliance shelf and socket

POPULAR SELECTED OPTIONS

- Central heating
- PVC double glazing
- Extra insulation
- Sliding patio doors including 2 downlighters
- Integrated microwave
- Pre-galvanised chassis or fully galvanised chassis
- Coffee table
- Upholstered storage footstool
- TV points to master bedroom and twin bedroom complete with signal booster
- One full size integrated appliance
- Gas strut metal lift up bed to master bedroom
- Standard bedding set or de-luxe bedding set (see pages 86–87)
- Gazunder twin beds
- Environmental colours, rigid PVC, Canaxel or timber cladding options

Please see our matrix at the back of the brochure for a comprehensive list of options.



DEBONAIR ACCESS



Following through in true Debonair style, this wheelchair accessible home has all the features required to enjoy your getaway. This holiday home is comfortable for wheelchair users and families.

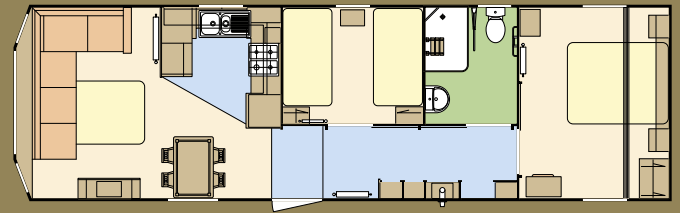


*Model illustrated 39 x 12 – 2 bedroom.
Duvets, pillows, bedrunner, TV, DVD player, and all other ornaments are for display only.*



DEBONAIR ACCESS





38 x 12 – 2 bedroom/6 berth

STANDARD FEATURE HIGHLIGHTS

- Free standing suite complete with scatter cushions
- Free standing table and chairs
- Pull out bed to lounge
- Integrated oven and grill with 4 ring hob and electric ignition
- Low energy lighting
- Sockets with USB port
- Recirculating electric cooker hood
- Over bed designer reading lights
- En-suite WC to master bedroom
- Integrated fridge freezer
- Exterior fan to main bathroom/shower room
- Appliance shelf and socket
- Wide, low threshold entrance door
- Wide corridor access
- Full wet room facility with support handles
- Low height kitchen work surfaces
- Pull out bed to lounge
- 3ft single bed to twin room
- Access hoist in main bed and twin room
- TV point above fireplace

POPULAR SELECTED OPTIONS

- Central heating
- PVC double glazing
- Extra insulation
- Integrated microwave
- Pre-galvanised chassis or fully galvanised chassis
- Coffee table
- Upholstered storage footstool
- TV points to master bedroom and twin bedroom complete with signal booster
- One full size integrated appliance
- Gas strut metal lift up bed to master bedroom
- Standard bedding set or de-luxe bedding set (see pages 86–87)
- Environmental colours, rigid PVC, Canaxel or timber cladding options

Please see our matrix at the back of the brochure for a comprehensive list of options.

CHORUS 4

7FT
WALL
HEIGHT



The Chorus is carefully designed to be both attractive and practical with a sense of contemporary flair.

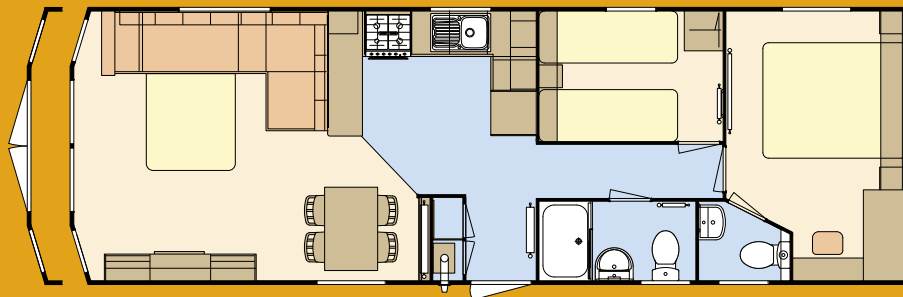
This year's model carries the indulgent feeling throughout the van with beautiful upholstered headboards, soft neutral furnishings and room to stretch out in, making it the perfect holiday home for both relaxing and entertaining.



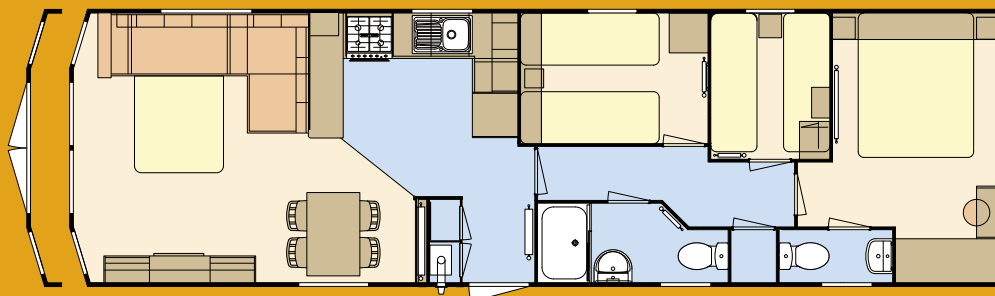


CHORUS 4





36 x 12 – 2 bedroom/6 berth



40 x 12 – 3 bedroom/8 berth

STANDARD FEATURE HIGHLIGHTS

- Central heating
- PVC double glazing
- Extra insulation
- Low energy lighting
- Exterior light
- Sockets with USB port
- Integrated oven and grill with 4 ring hob and electric ignition
- Cooker extractor vented to exterior
- L shape lounge seating
- Free standing dining table and chairs
- En-suite WC to master bedroom
- Feature strip lighting to bedrooms
- Extractor fan to main bathroom/shower room
- Integrated fridge freezer
- Pull out bed to lounge
- Appliance shelf and socket

POPULAR SELECTED OPTIONS

- Front French doors including 2 downlighters
- Pre-galvanised chassis or fully galvanised chassis
- Integrated microwave
- One full size integrated appliance
- Coffee table
- Scatter cushions to lounge
- TV point to master bedroom and twin bedroom complete with signal booster
- Standard bedding set or de-luxe bedding set (see pages 86–87)
- Gazunder twin beds
- Environmental colours, rigid PVC, Canexel or timber cladding options

Please see our matrix at the back of the brochure for a comprehensive list of options.



HERITAGE

7FT
WALL
HEIGHT



The stunning new 2020 Heritage feels exceptionally light and roomy with its 7ft side ceiling height and deep aspect windows. The interior is beautifully finished with two freestanding sofas and feature fire cabinet in the lounge and stunning contrast doors to all cabinets and fittings throughout.

FEATURE
ASPECT
WINDOWS



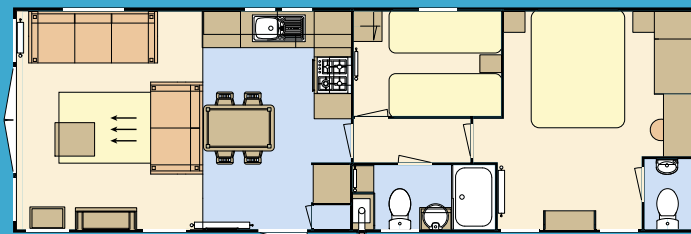
*Model illustrated 36 x 12 - 2 bedroom.
Duvets, pillows, bedrunner, TV, DVD player, and all other ornaments are for display only.*



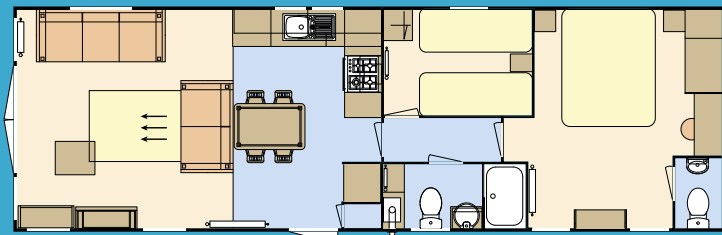
HERITAGE

LUXURIOUS
SPACIOUS
BEDROOM

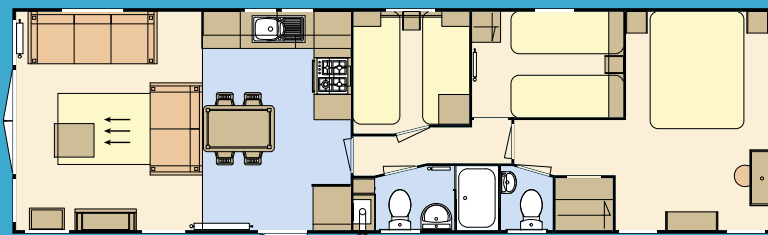




36 x 12 – 2 bedroom/6 berth



38 x 12 – 2 bedroom/6 berth



40 x 12 – 3 bedroom/8 berth

STANDARD FEATURE HIGHLIGHTS

- Matt finish chateaux grey cladding
- Low energy lighting
- Feature aspect windows
- Integrated fridge freezer
- Free standing sofas
- Pull out sofa bed to lounge
- Electric fire
- Feature fire cabinet
- Sockets with USB to bedrooms, kitchen and lounge
- Freestanding dining table and chairs
- Re-circulating electric extractor hood
- Integrated oven and grill with 4 ring hob with electric ignition
- Over bed reading lights
- Feature fire cabinet
- TV points and TV cabinet in master bedroom
- Pendant light over dining table
- Carpet with underlay
- En suite to 36' x 12' – 2 bed and 40' x 12' – 3 bed models
- Extractor fan to main bathroom/shower room
- Exterior light

POPULAR SELECTED OPTIONS

- Central heating
- PVC double glazing
- Xtra insulation
- Front French doors including 2 downlighters
- Integrated microwave
- Coffee table
- Pre-galvanised or fully galvanised chassis
- TV points to twin bedroom complete with signal booster
- One full size integrated appliance
- Gas strut lift up bed to master bedroom
- Standard or deluxe bedding set
- Gazunder twin beds
- Environmental colours, rigid PVC, Canexel or timber

Please see our matrix at the back of the brochure for a comprehensive list of options.



ADVENTURE



Providing the ultimate space to spend holidays together, the Adventure is the first of its kind. Quirky features can be found wherever you look in this well designed home, even featuring a bespoke playroom for entertaining the children.

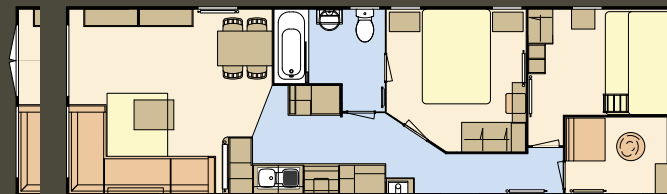


*Model illustrated 40 x 12-6 – 2 bedroom.
Duvets, pillows, bedrunner, TV, DVD player, and all other ornaments are for display only.*



ADVENTURE





Front French doors

40 x 12-6 – 2 bedroom/6 berth

STANDARD FEATURE HIGHLIGHTS

- Feature games room
- Pull out bed in play room (single)
- Game play bean bag cushion
- Over/under bunk bed in children's room with individual reading lights
- Central heating
- PVC double glazing
- Extra Insulation
- Low energy lighting
- Fixed L shaped seating
- Free standing dining table and chairs
- Black appliances throughout
- Integrated fridge freezer
- Integrated microwave
- Integrated oven and grill with 5 burner hob
- Recirculating extractor hood
- Fixed wine rack
- Family bathroom
- Shower over bath complete with wet wall and concertina bath screen
- Shaver point to shower room
- TV points in lounge, main bedroom and play room
- Mirrored wardrobes in main bedroom
- Over bed reading lights in main bedroom
- Sockets with USB ports throughout
- Coffee table
- Fold out bed in lounge
- Two large upholstered tub stools
- Exterior light

POPULAR SELECTED OPTIONS

- Front French doors including 2 downlighters
- Pre-galvanised or fully galvanised chassis
- Integrated wine cooler
- TV point to twin bedroom
- Gas strut metal lift up bed to master bedroom
- Standard bedding set or de-luxe bedding set (see pages 86–87)
- One full size integrated appliance space
- Environmental colours, rigid PVC, Canexel or timber cladding options

Please see our matrix at the back of the brochure for a comprehensive list of options.

AMETHYST 5

7FT
WALL
HEIGHT



The 2020 Atlas Amethyst is bursting with features and boasts a sophisticated colour scheme. The Amethyst is the classic holiday home re-imagined. Attention to detail makes this model feel extra special. This is a holiday home to relax and entertain in letting you create wonderful unforgettable memories.



*Model illustrated 38' x 12' - 2 bedroom.
Duvets, pillows, bedrunner, TV, DVD player, and all other ornaments are for display only.*

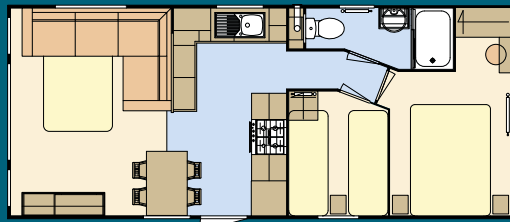
**NEW
2020
LAYOUT**



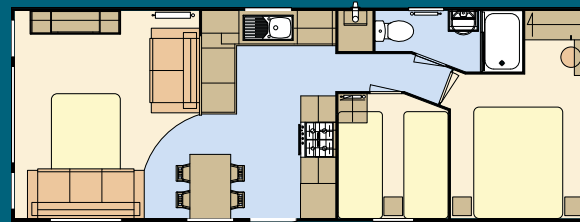
AMETHYST 5



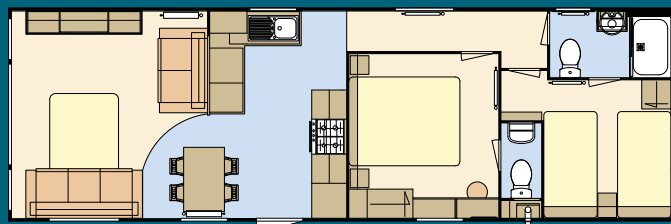
NEW 2020 LAYOUT



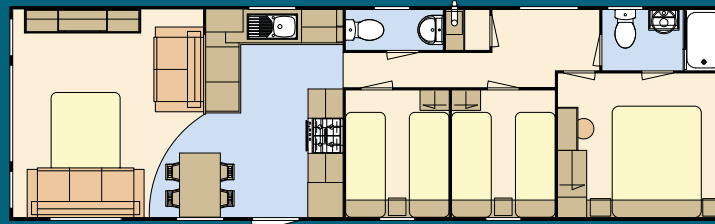
28 x 12 – 2 bedroom/6 berth



32 x 12 – 2 bedroom/6 berth



37 x 12 – 2 bedroom/6 berth



40 x 12 – 3 bedroom/8 berth

STANDARD FEATURE HIGHLIGHTS

- En-suite bathroom to 37 x 12 – 2 bed model
- En-suite WC to 40 x 12 – 3 bed model
- Extractor fan to main bathroom/shower room
- Sockets with USB port
- Exterior light
- Low energy lighting
- Pull out bed to lounge
- Free standing dining table and chairs
- Recirculating electric extractor hood
- Integrated oven and grill with 4 ring hob and electric ignition
- Integrated fridge freezer
- Over bed reading lights
- Appliance shelf and socket
- 3ft beds in twin – 37ft model

POPULAR SELECTED OPTIONS

- Central heating
- PVC double glazing
- Extra insulation
- Front French doors including 2 downlighters
- Integrated microwave
- Pre-galvanised chassis or fully galvanised chassis
- Coffee table
- TV points to master bedroom and twin bedroom complete with signal booster
- One full size integrated appliance

- Gas strut metal lift up bed to master bedroom
- Standard bedding set or de-luxe bedding set (see pages 86–87)
- Shower over bath complete with wet wall and concertina bath screen in 38 x 12 – 2 bedroom model
- Shower cubicle in lieu of bath
- Gazunder twin beds
- Environmental colours, rigid PVC, Canexel or timber cladding options

Please see our matrix at the back of the brochure for a comprehensive list of options.



ONYX 4

7FT
WALL
HEIGHT



The 2020 Atlas Onyx makes an instant impression with its signature look, exuding an incomparable feeling of luxury and giving you the perfect combination of chic comfort.

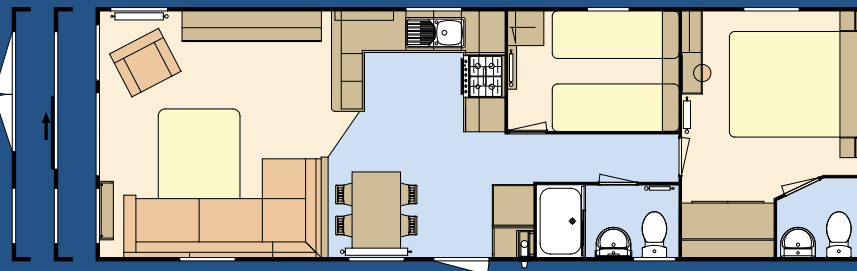
The interior furnishings and modern design combines to create a fantastic holiday home.



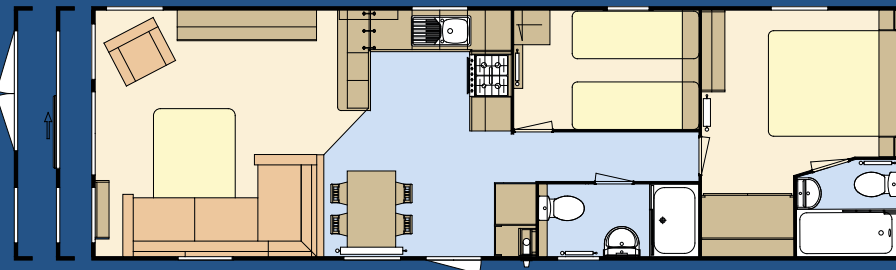
*Model illustrated 38 x 12 - 2 bedroom.
Duvets, pillows, bedrunner, TV, DVD player, and all other ornaments are for display only.*



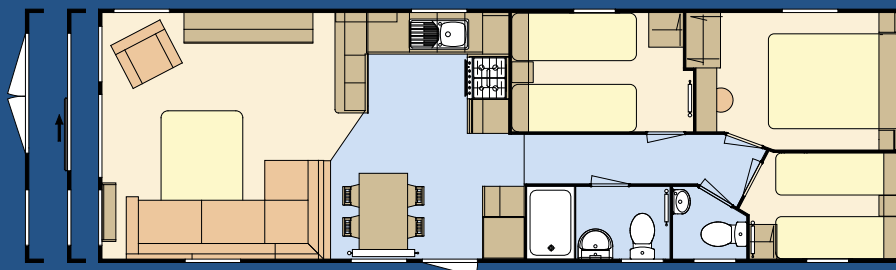




36 x 12 – 2 bedroom/6 berth



38 x 12 – 2 bedroom/6 berth



38 x 12 – 3 bedroom/8 berth

STANDARD FEATURE HIGHLIGHTS

- En-suite to 38 x 12 – 2 bedroom model
- En-suite WC to 36 x 12 – 2 bedroom model
- Exterior light
- Low energy lighting
- Pull out bed to lounge
- Sockets with USB port
- Free standing dining table and chairs
- Recirculating electric extractor hood
- Integrated oven and grill with 4 ring hob and electric ignition
- Integrated fridge freezer
- Appliance shelf and socket
- Over bed reading lights
- Bath to 38 x 12 – 2 bedroom model
- L shape seating and feature armchair
- Extractor fan to main bathroom/shower room

POPULAR SELECTED OPTIONS

- Central heating
- PVC double glazing
- Extra insulation
- Sliding patio doors including 2 downlighters
- Integrated microwave
- Pre-galvanised chassis or fully galvanised chassis
- Coffee table
- TV points to master bedroom and twin bedroom complete with signal booster
- One full size integrated appliance
- Gas strut metal lift up bed to master bedroom
- Standard bedding set or de-luxe bedding set (see pages 86–87)
- Shower over bath complete with wet wall and concertina bath screen in 38 x 12 – 2 bedroom model
- Shower cubicle in lieu of bath
- Gazunder twin beds
- Environmental colours, rigid PVC, Canexel or timber cladding options

Please see our matrix at the back of the brochure for a comprehensive list of options.



MIRAGE 3



The Atlas Mirage has all the everyday space that you need. The separate dining area is very practical and a great way to socialise with family and friends. The accent furnishing scheme guarantees to brighten up even those dullest of days.

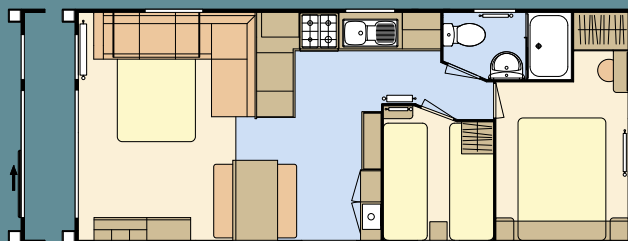


*Model illustrated 35 x 12 - 2 bedroom.
Duvets, pillows, bedrunner, TV, DVD player, and all other ornaments are for display only.*

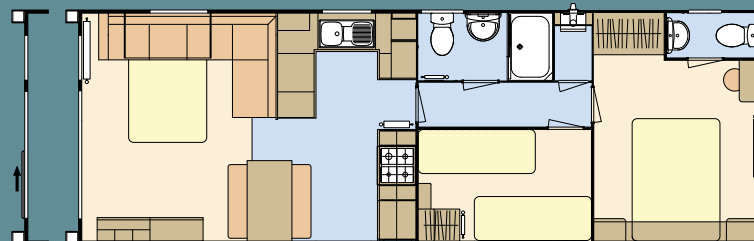


MIRAGE 3

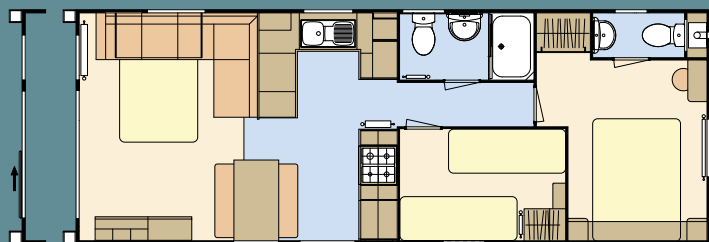




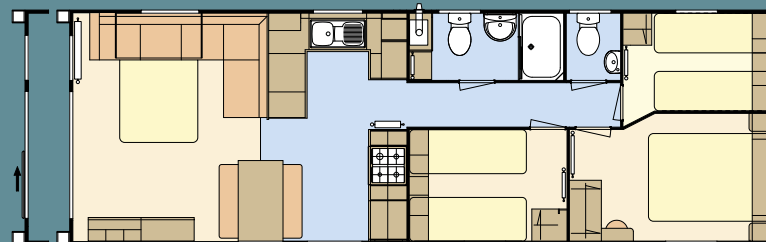
28 x 12 – 2 bedroom/6 berth



32 x 12 – 2 bedroom/6 berth



35 x 12 – 2 bedroom/6 berth



36 x 12 – 3 bedroom/8 berth

STANDARD FEATURE HIGHLIGHTS

- Integrated oven and grill with 4 ring hob and electric ignition
- Pull out bed to lounge
- Socket with USB port
- En-suite WC to 32' and 35' model
- Extractor fan to main bathroom/shower room
- Low energy lighting
- Exterior light
- Electric lounge fire
- Fixed dinette and bench seating
- L shaped fixed seating
- Appliance shelf and socket

POPULAR SELECTED OPTIONS

- Central heating
- PVC double glazing
- Extra insulation
- Under counter fridge or integrated fridge freezer
- Pre-galvanised chassis or fully galvanised chassis
- Free standing dining table and chairs
- TV point to master bedroom and twin bedroom complete with signal booster
- Coffee table

- Gas strut metal lift up bed to master bedroom
- Re-circulating extractor hood to kitchen
- Integrated microwave
- One full size integrated appliance
- Standard bedding set or de-luxe bedding set (see pages 86–87)
- Gazunder twin beds
- Environmental colours, Canexel or timber cladding options

Please see our matrix at the back of the brochure for a comprehensive list of options.



FESTIVAL



The Festival is modern yet cosy, perfect for those wanting to introduce themselves to holiday home living.

Upgrade with the great value deluxe pack to take your home to the next level, far beyond what you would expect from an entry level model.

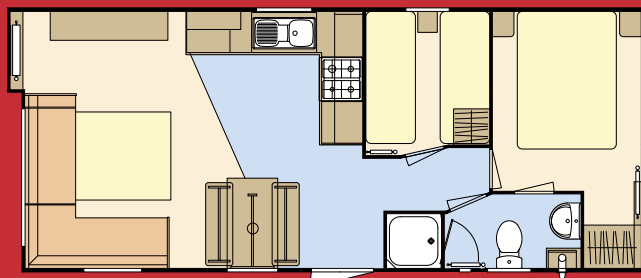


*Model illustrated 35 x 12 - 2 bedroom.
Duvets, pillows, bedrunner, TV, DVD player, and all other ornaments are for display only.*

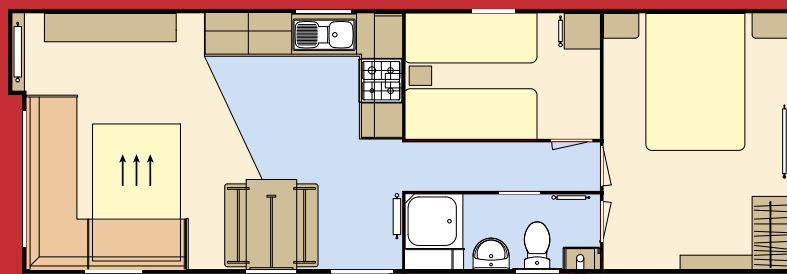


FESTIVAL

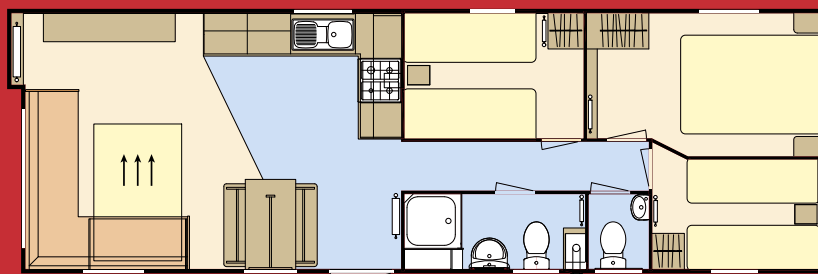




28 x 12 - 2 bedroom/6 berth



35 x 12 - 2 bedroom/6 berth



36 x 12 - 3 bedroom/8 berth

STANDARD FEATURE HIGHLIGHTS

- Xtra insulation
- Feature vaulted roofline
- Gas powered water heater
- Low energy lighting
- Integrated TV cabinet and storage
- Wrap around L shaped seating with pull out bed to lounge
- Oven and grill
- Modern worktops with cooker hob splash back
- Fixed dinette with bench seating
- Full height wardrobes
- GRP shower enclosure with thermostatically controlled shower

POPULAR SELECTED OPTIONS

- Warm Winter Pack (central heating and double glazing)
- Integrated microwave
- Free standing fridge
- Coffee table
- Exterior light
- Plinth heaters
- Bedding pack
- Environmental colours
- Pre-galvanised or fully galvanised chassis

Please see our matrix at the back of the brochure for a comprehensive list of options.

DELUXE PACK

- Integrated microwave
- Integrated fridge freezer
- Fully lined curtains on poles
- Voiles to all windows
- Carpet underlay
- Upgraded lounge seating to include separate cushions, arm and kickboards
- 40mm worktops
- 4 freestanding dining chairs
- 2-way light switching in master bedroom
- 2 opening side windows to lounge
- Feature fire in lounge
- Buttoned fabric headboards to all rooms
- Extra socket to bedrooms and USB socket in lounge
- Full splash back to cooker hob
- Scatter cushions x 3
- Bathroom extractor
- Re-circulation cooker hood
- Pre-galvanised chassis



MOONSTONE 7



The Moonstone is the entry point to the Atlas Leisure Homes range which has been tastefully designed to offer a spacious open plan lounge featuring a stylish electric fire along with a handy dining area seating which is a great space for family mealtimes.

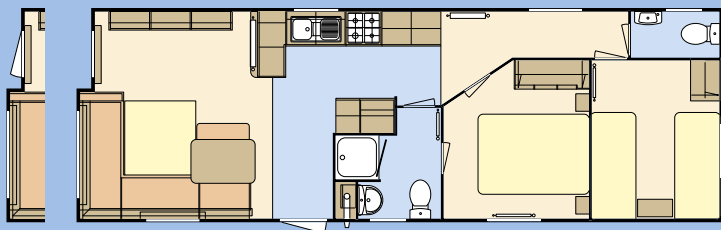


*Model illustrated 35 x 12 - 2 bedroom.
Duvets, pillows, bedrunner, TV, DVD player, and all other ornaments are for display only.*



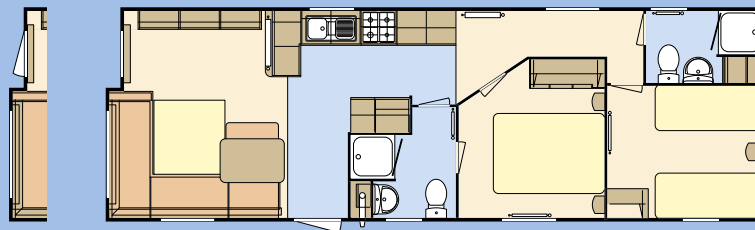
MOONSTONE 7





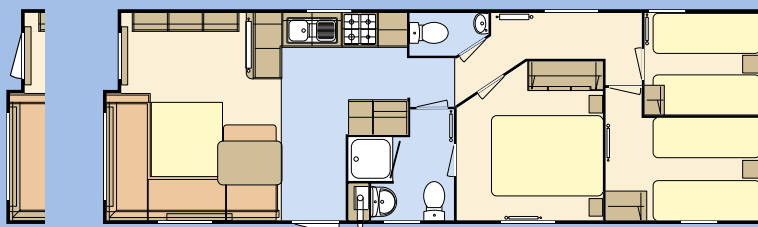
Front French door option

35 x 12 – 2 bedroom/6 berth



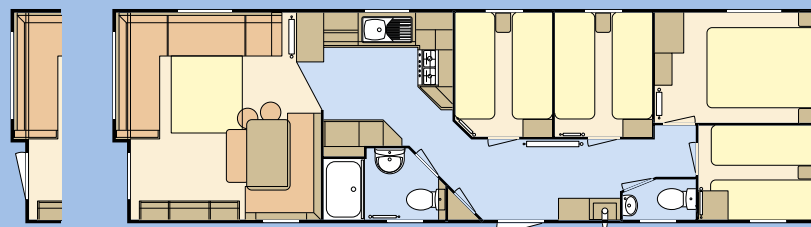
Front French door option

36 x 12ES – 2 bedroom/6 berth



Front French door option

36 x 12 – 3 bedroom/8 berth



Front French door option

39 x 12 – 4 bedroom/10 berth

STANDARD FEATURE HIGHLIGHTS

- Central heating
- PVC double glazing
- Integrated oven and grill c/w four ring hob and electric ignition
- Socket with USB port
- Low energy lighting
- Pull out bed to lounge
- En-suite to all models
- 2 shower rooms to 36 x 12 – 2 bedroom ES model
- Fixed dinette
- L shaped fixed seating
- Rear twin bedroom
- Appliance shelf and socket
- Extractor fan to main bathroom/shower room

POPULAR SELECTED OPTIONS

- Front French doors
- Integrated microwave
- Under counter fridge or integrated fridge freezer
- Pre-galvanised chassis or fully galvanised chassis
- Exterior light
- Coffee table
- TV point to master/twin bedrooms inc signal booster
- Standard bedding set or de-luxe bedding set (see pages 86–87)
- Thermostatic radiator valves
- Gazunder twin beds
- Environmental colours, rigid PVC, Canexel or timber cladding options

Please see our matrix at the back of the brochure for a comprehensive list of options.



FLORIDA



The Florida has a great specification and offers true affordable luxury.

The clever design offers real flexibility to choose a leisure home that meets your exact requirements making this the perfect getaway choice to spend with family and friends.

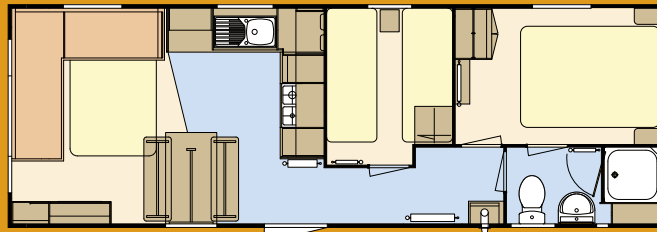


*Model illustrated 32x10 - 2 bedroom.
Duvets, pillows, bedrunner, TV, DVD player, and all other ornaments are for display only.*

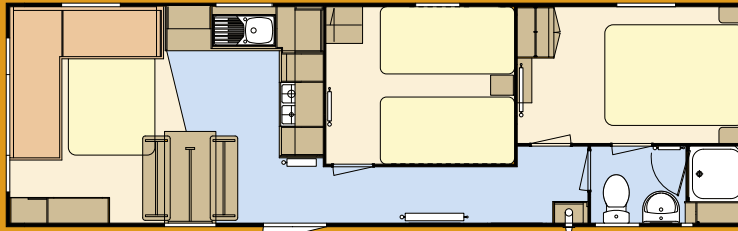


FLORIDA

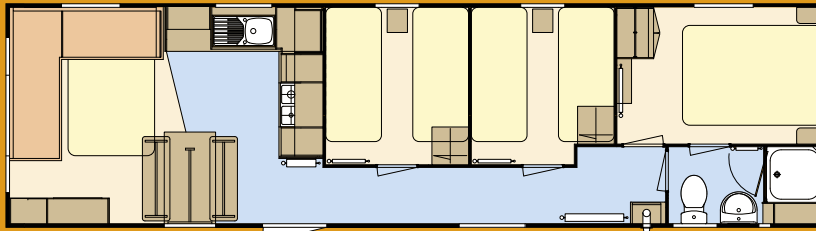




28 x 10 – 2 bedroom/6 berth



32 x 10 – 2 bedroom/6 berth



36 x 10 – 3 bedroom/8 berth

STANDARD FEATURE HIGHLIGHTS

- Integrated oven and grill with 4 ring hob and electric ignition
- Pull out bed to lounge
- Socket with USB port
- Extractor fan to main bathroom/shower room
- Exterior light
- Electric lounge fire
- Fixed dinette
- L shaped fixed seating
- Appliance shelf and socket

POPULAR SELECTED OPTIONS

- Central heating
- PVC double glazing
- Extra insulation
- Under counter fridge
- Pre-galvanised chassis or fully galvanised chassis
- TV point to master bedroom and twin bedroom complete with signal booster
- Coffee table
- Gas strut metal lift up bed to master bedroom
- Re-circulating extractor hood to kitchen
- Integrated microwave
- Standard bedding set or de-luxe bedding set (see pages 86–87)

Please see our matrix at the back of the brochure for a comprehensive list of options.



STANDARD FEATURES AND OPTIONS

At Atlas we know that, even when you're on holiday, you still want all the home comforts you're used to. The entire Atlas range includes many domestic style features you may not expect to find in a holiday home as standard. Our wide range of models offers an unparalleled standard finish on each caravan including:

- Tongue & grooved P5 moisture resistant flooring
- Underfloor insulation
- Lagged hot and cold water exterior pipework
- Flush internal doors with satin steel handles
- Venetian blinds to kitchen/shower/en-suite/bathroom

- Energy efficient light fittings
- All showers are fitted with thermostatic mixer valves
- Vaulted ceilings throughout
- Smoke detector
- Carbon monoxide detector
- Fire extinguisher
- Emergency escape windows

We also offer an exciting range of options, unique to each model, allowing you to make your holiday home truly individual.

- Key**
- Standard
 - Optional
 - × Not Available
 - Not applicable

	Laburnum Lodge 3	Debonair Lodge 2	Lilac Lodge 10	Azalea Lodge 2	Ovation Lodge 4	Sherwood Lodge 5	Image 7	Status 2	Debonair 7	Debonair Access	Chorus 4	Heritage	Adventure	Amethyst 5	Onyx 4	Mirage 3	Festival	Moonstone 7	Florida
Exterior																			
Painted chassis	×	×	×	×	×	×	×	●	●	●	●	●	●	●	●	●	●	●	●
Pre-galvanised chassis	–	–	–	–	●	●	●	□	□	□	□	□	□	□	□	□	□	□	□
Fully galvanised chassis	●	●	●	●	□	□	□	□	□	□	□	□	□	□	□	□	□	□	□
Woodgrain aluminium cladding	×	×	×	×	×	×	●	●	●	●	●	●	●	●	●	●	●	●	●
Environmental green exterior	□	□	□	□	□	□	□	□	□	□	□	□	□	□	□	□	□	□	□
Canexel cladding	□	□	□	□	□	□	□	□	□	□	□	□	□	□	□	□	□	□	□
Rigid PVC cladding	●	●	□	●	●	●	□	□	□	□	□	□	□	□	□	□	□	□	□
Royal vinyl cladding	×	×	●	×	×	×	×	×	×	×	×	×	×	×	×	×	×	×	×
Timber cladding	□	□	□	□	□	□	□	□	□	□	□	□	□	□	□	□	□	□	□
Velux roof light	●	×	×	●	●	□	●	×	×	×	×	×	×	×	×	×	×	×	×
Exterior light(s)	●	●	●	●	●	●	●	●	●	●	●	●	●	●	●	●	□	□	□
Front French door(s) inc. downlighter	×	●	□	●	●	×	×	□	×	×	□	□	□	□	×	□	×	□*	×
Front French door(s) (no downlighters)	×	×	●	–	–	×	×	–	×	×	–	–	×	–	×	–	×	×	×
Sliding patio door(s) inc. downlighter	●	×	×	×	×	●	●	×	□	×	×	×	●	×	□	×	×	×	×
Insulation																			
Ultrawarm insulation	×	×	□	×	□	×	□	□	□	□	□	□	□	□	□	□	□	□	□
Trace heating	□	□	□	□	□	□	□	□	□	□	□	□	□	□	□	□	□	□	□
PVCu double glazed windows and doors	●	●	●	●	●	●	●	□	□	□	●	□	●	□	□	□	WP	●	□
'Low E' double glazing	●	●	□	●	□	●	□	□	□	□	□	□	□	□	□	□	□	□	□
Interior																			
Gas combi central heating with thermostatic radiator valves	●	●	●	●	●	●	●	□	□	□	●	□	●	□	□	□	WP	□**	□
Gas water heater – 11 litre capacity	×	–	–	–	–	–	–	●	●	●	–	●	–	●	●	●	●	–	●
Electric plinth heaters with heated towel rails	×	×	×	×	×	×	×	□	□	□	□	□	×	□	□	□	□	□	□
Net curtains or voiles	●	●	□	●	●	●	●	●	●	●	●	●	●	●	●	●	DLP	×	●
Low energy lighting	●	●	●	●	●	●	●	●	●	●	●	●	●	●	●	●	●	●	●

* Single door only ** No thermostatic radiator valves
WP – Winter Pack (central heating & PVCu double glazing)

† Master bedroom only
DLP – Deluxe pack – see model details

Standard Bedding Set consists of: Duvet covers/pillowcases and runners for all bedrooms plus 2 x scatter cushions.
De-luxe Bedding Set consists of: Quilt and pillow inserts and bolster cushion plus the standard bedding set.

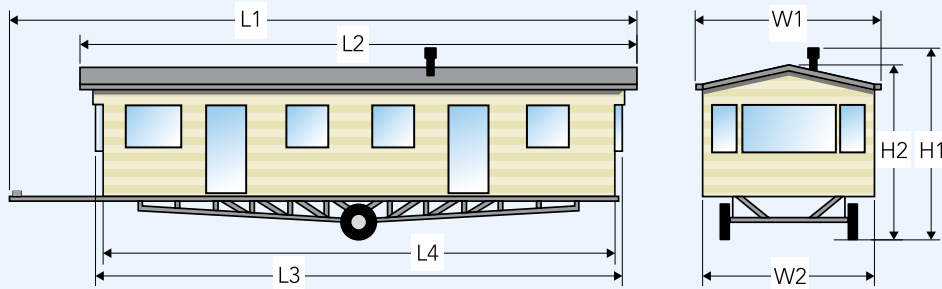
Key

- Standard
- Optional
- × Not Available
- Not applicable

	Laburnum Lodge 3	Debonair Lodge 2	Lilac Lodge 10	Azalea Lodge 2	Ovation Lodge 4	Sherwood Lodge 5	Image 7	Status 2	Debonair 7	Debonair Access	Chorus 4	Heritage	Adventure	Amethyst 5	Onyx 4	Mirage 3	Festival	Moonstone 7	Florida
Lounge & Dining Area																			
Free standing suite	●	●	●	●	●	●	●	●	●	●	×	●	×	×	×	×	×	×	×
Fold out occasional bed	□	□	□	□	□	●	●	●	●	●	●	●	●	●	●	●	●	●	●
Fixed dinette	×	×	×	×	×	×	×	×	×	×	×	×	×	×	×	●	●	×	●
Free standing dining table and four chairs	×	●	●	●	●	●	●	●	●	●	●	●	●	●	●	□	DLP	×	□
Scatter cushions to lounge	●	□	□	□	□	●	●	●	●	●	□	□	□	□	□	□	DLP	□	□
Electric fire	●	●	●	●	●	●	●	●	●	●	●	●	×	●	●	●	DLP	●	●
Coffee table	●	□	□	●	●	●	●	●	□	□	□	□	●	□	□	□	DLP	□	□
Vertical blinds	●	×	×	●	×	×	●	●	×	×	×	×	×	×	×	×	×	×	×
Provision for up to 32" wall mounted TV (does not include bracket)	●	□	□	●	●	□	□	□	□	□	□	□	□	□	□	□	□	□	□
Kitchen/Utility Room																			
Electric extractor hood	●	●	●	●	●	●	●	●	●	●	●	●	●	●	●	□	DLP	□	□
4 burner hob with electronic ignition	×	×	×	×	×	●	×	●	●	●	●	●	●	●	●	●	●	●	●
5 burner hob with electronic ignition	●	●	●	●	●	×	×	×	×	×	×	×	●	×	×	×	×	×	×
Range cooker	×	●	×	×	×	×	×	×	×	×	×	×	×	×	×	×	×	×	×
Soft close hinges to doors throughout	●	●	×	●	●	●	□	□	●	●	×	×	×	×	×	×	×	×	×
Integrated microwave oven	●	●	□	●	●	●	●	□	□	□	□	□	●	□	□	□	DLP	□	□
Integrated dishwasher	●	●	□	●	□	□	□	□	□	□	□	□	□	□	□	□	□	×	×
Integrated slimline dishwasher	□	□	□	×	□	□	□	×	□	□	×	×	×	×	×	×	×	×	×
Integrated washing machine or washer dryer	□	□	□	□	□	×	×	□	□	□	□	□	□	□	□	□	□	×	×
Free standing washer dryer	□	□	□	×	□	□	□	□	□	×	□	×	□	□	□	□	□	×	×
Integrated fridge/freezer	●	●	●	●	●	●	●	●	●	●	●	●	●	●	●	□	DLP	□	□
Wine cooler	□	□	□	□	□	□	□	□	×	×	×	×	●	×	×	×	×	×	×
Bedrooms																			
Freestanding metal bed frames with interior sprung mattresses	×	×	×	●	●	●	●	●	●	●	●	●	●	●	●	●	●	●	●
Gas strut assisted metal lift up storage bed to main bedroom	□	□	□	□	●	□	●	●	□	□	□	□	□	□	□	□	□	×	×
Divan beds to main and / or twin bedrooms	●	●	●	● [†]	×	×	×	×	×	×	×	×	×	×	×	×	×	×	×
TV point to master bedroom	●	●	●	●	●	□	●	□	□	□	□	□	□	□	□	□	□	□	□
TV point to twin bedroom	●	●	●	□	□	□	●	□	□	□	□	□	□	□	□	□	□	□	□
'Guzunder' space saving bed (twin rooms only)	□	□	□	□	□	□	□	□	□	□	□	□	□	□	□	□	□	□	□
Bathroom/Shower																			
Soft close toilet seat(s)	●	●	×	●	●	×	●	×	●	●	●	●	●	●	●	×	×	×	×
Extractor fan to main shower/bathroom	●	●	●	●	●	●	●	●	●	●	●	●	●	●	●	●	●	×	●
Extractor fan to en-suite/separate toilet	●	●	●	●	●	●	●	●	×	×	●	●	●	●	●	●	×	×	×
Shower cubicle in lieu of bath	□	□	□	□	□	□	□	□	×	×	×	×	□	×	□	×	×	×	×
Towel radiator as part of central heating package	□	□	□	□	□	□	□	□	□	×	□	□	□	□	□	□	□	□	□
Shower over bath	●	●	●	●	□	□	□	□	×	×	×	×	×	□	□	×	×	×	×

EXTERNAL DIMENSIONS

Model	L1		L2		L3		L4		W1		W2		H1		H2	
Laburnum Lodge 3 40 x 20 – 2 bed/4 berth	13.520m	44' 4"	12.936m	42' 5"	12.469m	40' 11"	12.469m	40' 11"	6.684m	21' 11"	6.172m	20' 3"	3.750m	12' 4"	3.750m	12' 4"
Debonair Lodge 2 40 x 20 – 2 bed/4 berth	14.486m	47' 5"	13.622m	42' 9"	12.542m	41' 2"	12.492m	41' 0"	6.684m	21' 11"	6.172m	20' 3"	3.750m	12' 4"	3.750m	12' 4"
Azalea Lodge 2 43 x 13 – 2 bed/4 berth	14.387m	47' 2½"	13.965m	45' 10"	13.525m	44' 4½"	13.177m	43' 3"	4.212m	13' 10"	4.040m	13' 3"	3.792m	12' 5¼"	3.792m	12' 5¼"
Azalea Lodge 2 43 x 13 – 2 bed/4 berth OP	14.387m	47' 2½"	13.965m	45' 10"	13.525m	44' 4½"	13.177m	43' 3"	4.212m	13' 10"	4.040m	13' 3"	3.792m	12' 5¼"	3.792m	12' 5¼"
Lilac Lodge 10 40 x 16 – 2 bed/4 berth	13.274m	43' 6½"	13.061m	42' 10¼"	12.252m	40' 2¼"	12.252m	40' 2¼"	5.464m	17' 11"	4.952m	16' 3"	3.650m	11' 11¾"	3.650m	11' 11¾"
Lilac Lodge 10 40 x 16 – 3 bed/6 berth	13.274m	43' 6½"	13.061m	42' 10¼"	12.252m	40' 2¼"	12.252m	40' 2¼"	5.464m	17' 11"	4.952m	16' 3"	3.650m	11' 11¾"	3.650m	11' 11¾"
Lilac Lodge 10 36 x 20 – 2 bed/4 berth	11.994m	39' 4"	11.781m	38' 8"	10.972m	36' 2½"	10.972m	36' 2½"	6.684m	21' 11"	6.172m	20' 3"	3.750m	12' 3¾"	3.750m	12' 3¾"
Lilac Lodge 10 40 x 20 – 2 bed/4 berth	13.274m	43' 6½"	13.061m	42' 10¼"	12.252m	40' 2¼"	12.252m	40' 2¼"	6.684m	21' 11"	6.172m	20' 3"	3.750m	12' 3¾"	3.750m	12' 3¾"
Lilac Lodge 10 40 x 20 – 3 bed/6 berth	13.274m	43' 6½"	13.061m	42' 10¼"	12.252m	40' 2¼"	12.252m	40' 2¼"	6.684m	21' 11"	6.172m	20' 3"	3.750m	12' 3¾"	3.750m	12' 3¾"
Ovation Lodge 4 43 x 13 – 2 bed/6 berth	14.187m	46' 6"	13.528m	44' 4"	13.167m	43' 2"	13.137m	43' 1"	4.294m	14' 1"	4.022m	13' 2"	3.688m	12' 1"	3.688m	12' 1"
Sherwood Lodge 5 40 x 13 – 2 bed/6 berth	13.600m	44' 7½"	12.750m	41' 10"	12.450m	40' 10"	12.450m	40' 10"	4.310m	14' 1½"	4.070m	13' 4¼"	3.610m	11' 10½"	3.610m	11' 11"
Image 7 41 x 12-6 – 2 bed/6 berth	13.677m	44' 10½"	12.877m	42' 3"	12.527m	41' 1"	12.527m	41' 1"	4.113m	13' 6"	3.835m	12' 7"	3.430m	11' 3"	3.430m	11' 3"
Image 7 41 x 12-6 – 3 bed/8 berth	13.930m	45' 8½"	13.130m	43' 1"	12.780m	41' 11"	12.780m	41' 11"	4.113m	13' 6"	3.835m	12' 7"	3.430m	11' 3"	3.430m	11' 3"
Status 2 38 x 12-6 – 2 bed/6 berth	12.913m	42' 4"	12.176m	40' 0"	11.863m	39' 0"	11.833m	38' 9"	4.113m	13' 6"	3.835m	12' 7"	3.400m	11' 2"	3.400m	11' 2"
Status 2 39 x 12-6 – 3 bed/8 berth	13.217m	43' 4"	12.480m	41' 0"	12.170m	40' 0"	12.140m	39' 8"	4.113m	13' 6"	3.835m	12' 7"	3.400m	11' 2"	3.400m	11' 2"
Debonair 7 36 x 12 – 2 bed/6 berth	12.392m	40' 7¾"	11.575m	37' 11¾"	11.447m	37' 6¾"	11.147m	36' 6¾"	3.860m	12' 8"	3.680m	12' 1"	3.390m	11' 1½"	3.390m	11' 1½"
Debonair 7 38 x 12 – 2 bed/6 berth	13.092m	42' 11½"	12.275m	40' 3¼"	12.147m	39' 10¼"	11.847m	38' 10½"	3.860m	12' 8"	3.680m	12' 1"	3.390m	11' 1½"	3.390m	11' 1½"
Debonair 7 38 x 12 – 3 bed/8 berth	13.092m	42' 11½"	12.275m	40' 3¼"	12.147m	39' 10¼"	11.847m	38' 10½"	3.860m	12' 8"	3.680m	12' 1"	3.390m	11' 1½"	3.390m	11' 1½"
Debonair Access 39 x 12 – 2bed/6 berth	13.037m	42' 9"	12.377m	40' 7"	12.317m	40' 5"	12.367m	40' 7"	3.860m	12' 8"	3.680m	12' 1"	3.390m	11' 1½"	3.390m	11' 1½"
Chorus 4 36 x 12 – 2 bed/6 berth	11.944m	39' 2"	11.458m	37' 6"	11.160m	36' 7"	10.894m	35' 8"	3.860m	12' 7"	3.680m	12' 1"	3.390m	11' 2"	3.390m	11' 2"
Chorus 4 40 x 12 – 3 bed/8 berth	13.200m	43' 3' '	12.669m	41' 5' '	12.321m	40' 4' '	12.221m	40' 0"	3.860m	12' 7"	3.680m	12' 1"	3.390m	11' 2"	3.390m	11' 2"
Heritage 36 x 12 – 2 bed/6 berth	12.189m	40' 0"	11.507m	37' 9¼"	11.115m	36' 5¼"	11.115m	36' 5¼"	3.860m	12' 7"	3.680m	12' 1"	3.390m	11' 2"	3.390m	11' 2"
Heritage 38 x 12 – 2 bed/6 berth	12.676m	41' 7"	11.994m	39' 4"	11.602m	38' 1"	11.602m	38' 1"	3.860m	12' 7"	3.680m	12' 1"	3.390m	11' 2"	3.390m	11' 2"
Heritage 40 x 12 – 3 bed/8 berth	13.438m	44' 1¼"	12.756m	41' 10¼"	12.364m	40' 6¾"	12.364m	40' 6¾"	3.860m	12' 7"	3.680m	12' 1"	3.390m	11' 2"	3.390m	11' 2"
Adventure 40 x 13 – 2 bed/6 berth	13.117m	43' 0"	12.740m	41' 7' '	12.454m	40' 8' '	12.394m	40' 6' '	4.212m	13' 10' '	4.040m	13' 3' '	3.610m	11' 10' '	3.610m	11' 10' '
Amethyst 5 28 x 12 – 2 bed/6 berth	9.740m	31' 11"	9.222m	30' 3"	8.690m	28' 6"	8.690m	28' 6"	3.860m	12' 7"	3.680m	12' 1"	3.390m	11' 2"	3.390m	11' 2"
Amethyst 5 32 x 12 – 2 bed/6 berth	10.960m	35' 11"	10.442m	34' 3"	9.910m	32' 6"	9.910m	32' 6"	3.860m	12' 7"	3.680m	12' 1"	3.390m	11' 2"	3.390m	11' 2"
Amethyst 5 37 x 12 – 2 bed/6 berth	12.482m	40' 11"	11.964m	39' 3"	11.432m	37' 6"	11.432m	37' 6"	3.860m	12' 7"	3.680m	12' 1"	3.390m	11' 2"	3.390m	11' 2"
Amethyst 5 40 x 12 – 3 bed/8 berth	13.347m	43' 9"	12.829m	42' 1"	12.297m	40' 4"	12.297m	40' 4"	3.860m	12' 7"	3.680m	12' 1"	3.390m	11' 2"	3.390m	11' 2"
Onyx 3 36 x 12 – 2 bed/6 berth	12.180m	40' 0"	11.380m	37' 4"	11.160m	36' 7"	11.130m	36' 6"	3.860m	12' 7"	3.680m	12' 1"	3.390m	11' 2"	3.390m	11' 2"
Onyx 3 38 x 12 – 2 bed/6 berth	12.805m	42' 1"	12.005m	39' 4"	11.785m	39' 4"	11.755m	38' 6"	3.860m	12' 7"	3.680m	12' 1"	3.390m	11' 2"	3.390m	11' 2"
Onyx 2 40 x 12 – 3 bed/8 berth	13.405m	44' 0"	12.605m	41' 4"	12.385m	40' 7"	12.355m	40' 6"	3.860m	12' 7"	3.680m	12' 1"	3.390m	11' 2"	3.390m	11' 2"
Mirage 3 28 x 12 – 2 bed/6 berth	9.630m	31' 6"	9.080m	29' 8"	8.886m	29' 2"	8.686m	28' 5"	3.860m	12' 7"	3.680m	12' 1"	3.390m	11' 2"	3.390m	11' 2"
Mirage 3 32 x 12 – 2 bed/6 berth	10.850m	35' 6"	10.300m	33' 8"	10.106m	33' 6"	9.906m	32' 5"	3.860m	12' 7"	3.680m	12' 1"	3.390m	11' 2"	3.390m	11' 2"
Mirage 3 35 x 12 – 2 bed/6 berth	12.095m	39' 7"	11.245m	36' 9"	10.848m	35' 6"	10.818m	35' 5"	3.860m	12' 7"	3.680m	12' 1"	3.390m	11' 2"	3.390m	11' 2"
Mirage 3 36 x 12 – 3 bed/8 berth	12.524m	41' 0"	11.574m	37' 9"	12.005m	36' 10"	11.275m	36' 9"	3.860m	12' 7"	3.680m	12' 1"	3.390m	11' 2"	3.390m	11' 2"
Festival 28 x 10 – 2 bed/6 berth	9.715m	31' 10"	9.048m	29' 8"	8.865m	29' 1"	8.665m	28' 5"	3.860m	12' 7"	3.680m	12' 1"	3.390m	11' 2"	3.390m	11' 2"
Festival 35 x 10 – 2 bed/6 berth	11.664m	38' 3¼"	11.061m	36' 3½"	10.888m	35' 8¾"	10.688m	35' 1"	3.860m	12' 7"	3.680m	12' 1"	3.390m	11' 2"	3.390m	11' 2"
Festival 36 x 10 – 3 bed/8 berth	12.160m	39' 10¾"	11.513m	37' 9¼"	11.330m	37' 2¼"	11.130m	36' 6¼"	3.860m	12' 7"	3.680m	12' 1"	3.390m	11' 2"	3.390m	11' 2"
Moonstone 7 35 x 12 – 2 bed/6 berth	12.300m	40' 4"	11.251m	36' 11"	11.098m	36' 5"	10.848m	35' 7"	3.860m	12' 7"	3.680m	12' 1"	3.330m	10' 11"	3.330m	10' 11"
Moonstone 7 36 x 12 – 2 bed/6 berth ES	12.355m	40' 6"	11.502m	37' 8"	11.335m	37' 2"	11.305m	37' 1"	3.860m	12' 7"	3.680m	12' 1"	3.330m	10' 11"	3.330m	10' 11"
Moonstone 7 36 x 12 – 3 bed/8 berth	12.355m	40' 6"	11.502m	37' 8"	11.335m	37' 2"	11.305m	37' 1"	3.860m	12' 7"	3.680m	12' 1"	3.330m	10' 11"	3.330m	10' 11"
Moonstone 7 39 x 12 – 4 bed/10 berth	13.370m	43' 10"	12.326m	40' 7"	12.167m	39' 11"	12.137m	39' 10"	3.860m	12' 7"	3.680m	12' 1"	3.330m	10' 11"	3.330m	10' 11"
Florida 28 x 10 – 2 bed/6 berth	10.716m	35' 2"	9.216m	30' 2"	8.966m	29' 4' "	8.716m	28' 6"	3.860m	12' 7"	3.860m	12' 1"	3.260m	10' 8¼"	3.260m	10' 8¼"
Florida 32 x 10 – 2 bed/6 berth	11.904m	39' 0"	10.404m	34' 1"	10.154m	33' 3"	9.904m	32' 5"	3.860m	12' 7"	3.860m	12' 1"	3.260m	10' 8¼"	3.260m	10' 8¼"
Florida 36 x 10 – 3 bed/8 berth	12.926m	42' 4"	11.426m	36' 6"	11.176m	36' 6"	10.926m	35' 8"	3.860m	12' 7"	3.860m	12' 1"	3.260m	10' 8¼"	3.260m	10' 8¼"



Dimensions shown are for standard clad units only, please contact Atlas for dimensions of optional clad units.

A SUMMARY OF BED SIZES ACROSS THE RANGE

	2'-0" x 6'-0" Single	2'-3" x 6'-0" Single	2'-6" x 6'-0" Single	3'-0" x 6'-0" Large Single	2'-6" x 6'-3" Long Single	3'-0" x 6'-3" Large Double	5'-0" x 6'-3" Kingsize
Laburnum Lodge 2							
40 x 20 – 2 bed/4 berth						●	●
Debonair Lodge 2							
40 x 20 – 2 bed/4 berth						●	●
Lilac Lodge 10							
40 x 16 – 2 bed/4 berth						●	●
40 x 16 – 3 bed/6 berth					●		●
36 x 20 – 2 bed/4 berth						●	●
40 x 20 – 2 bed/4 berth						●	●
40 x 20 – 3 bed/6 berth					●	●	●
Azalea Lodge 2							
43 x 13 – 2 bed/4 berth						●	●
Ovation Lodge 4							
43 x 13 – 2 bed/6 berth				●			●
Sherwood Lodge 5							
40 x 13 – 2 bed/6 berth				●			●
Image 7							
41 x 12-6 – 2 bed/6 berth						●	●
41 x 12-6 – 3 bed/8 berth			●		●		●
Status 2							
38 x 12-6 – 2 bed/6 berth		●					●
39 x 12-6 – 3 bed/8 berth		●				●	

	2'-0" x 6'-0" Single	2'-3" x 6'-0" Single	2'-6" x 6'-0" Single	3'-0" x 6'-0" Large Single	2'-6" x 6'-3" Long Single	3'-0" x 6'-3" Large Single	4'-6" x 6'-3" Large Double	5'-0" x 6'-3" Kingsize
Debonair 7								
36 x 12 – 2 bed/6 berth		●						●
38 x 12 – 2 bed/6 berth		●						●
38 x 12 – 3 bed/8 berth	●	●					●	
Debonair Access								
39 x 12 – 2 bed/6 berth				●				●
Chorus 4								
36 x 12 – 2 bed/6 berth		●						●
40 x 12 – 3 bed/8 berth	●	●						●
Heritage								
36 x 12 – 2 bed/6 berth		●						●
38 x 12 – 2 bed/6 berth		●						●
40 x 12 – 3 bed/8 berth		●	●					●
Adventure								
40 x 12-6 – 2 bed/6 berth						●	●	
Amethyst 5								
28 x 12 – 2 bed/6 berth		●					●	
32 x 12 – 2 bed/6 berth			●					●
37 x 12 – 2 bed/6 berth				●				●
40 x 12 – 3 bed/8 berth		●						●
Onyx 4								
36 x 12 – 2 bed/6 berth		●						●
38 x 12 – 2 bed/6 berth		●						●
40 x 12 – 3 bed/8 berth	●	●						●

	2'-0" x 6'-0" Single	2'-3" x 6'-0" Single	2'-6" x 6'-0" Single	3'-0" x 6'-0" Large Single	2'-6" x 6'-3" Long Single	3'-0" x 6'-3" Large Single	4'-6" x 6'-3" Large Double	5'-0" x 6'-3" Kingsize
Mirage 3								
28 x 12 – 2 bed/6 berth		●					●	
32 x 12 – 2 bed/6 berth		●					●	
35 x 12 – 2 bed/6 berth		●					●	
36 x 12 – 3 bed/8 berth	●	●					●	
Festival								
28 x 12 – 2 bed/6 berth		●					●	
35 x 12 – 2 bed/6 berth		●					●	
36 x 12 – 3 bed/8 berth	●	●					●	
Moonstone 7								
35 x 12 – 2 bed/6 berth			●				●	
36 x 12 – 2 bed/6 berth ES			●				●	
36 x 12 – 3 bed/8 berth		●					●	
39 x 12 – 4 bed/10 berth		●					●	
Florida								
28 x 10 – 2 bed/6 berth		●					●	
32 x 10 – 2 bed/6 berth				●			●	
36 x 10 – 3 bed/8 berth			●				●	

WHATEVER THE WEATHER
MAY THROW AT YOU,
WE'VE GOT YOU COVERED

All Atlas Leisure Homes are designed with you in mind. Choosing the right exterior can depend on your climate, personal preference or park licence. There are several finishing options available for you to tailor your holiday home to your individual tastes and preferences.

ALUMINIUM



CHAMPAGNE

BARLEY
WHITE

CHÂTEAU
GREY



SANDSTONE

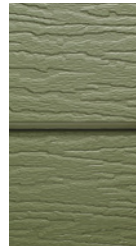
QUARRY GREY
Environmental
Green

FEATHER EDGE PVC



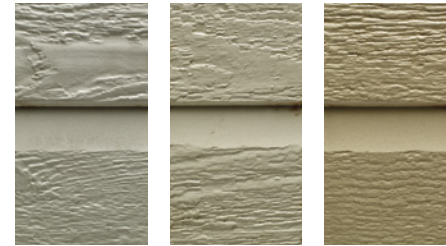
STONE

GREY



ENVIRONMENTAL
GREEN

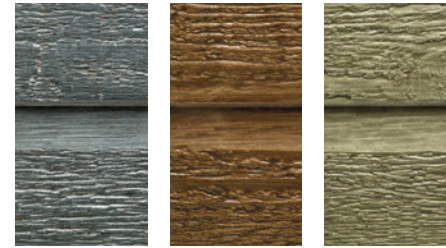
CANEXEL



MIST GREY

RIVER ROCK

SAND



COASTLINE

SIERRA

ACADIA
Environmental

SOFT VINYL



SAND

- Key**
- Standard
 - Optional
 - ✗ Not Available
 - Not applicable

Laburnum Lodge 2 Graphite win/doors as std	Debonair Lodge Graphite win/doors as std	Lilac Lodge White win/doors as std	Azalea Lodge Graphite win/doors as std	Ovation Lodge White win/doors as std	Sherwood Lodge White win/doors as std	Image Graphite win/doors as std	Status White win/doors as std	Debonair White win/doors as std	Debonair Access White win/doors as std	Chorus White win/doors as std	Heritage White win/doors as std	Adventure White win/doors as std	Amethyst White win/doors as std	Onyx White win/doors as std	Mirage White win/doors as std	Festival White win/doors as std	Moonstone White win/doors as std	Florida White win/doors as std
---	---	---------------------------------------	---	---	--	------------------------------------	----------------------------------	------------------------------------	---	----------------------------------	------------------------------------	-------------------------------------	------------------------------------	--------------------------------	----------------------------------	------------------------------------	-------------------------------------	-----------------------------------

Aluminium																			
Champagne	✗	✗	✗	✗	✗	—	✗	✗	✗	✗	✗	✗	●	✗	●	✗	●	●	●
Barley White	✗	✗	✗	✗	✗	—	✗	✗	●	●	●	✗	✗	✗	✗	✗	✗	✗	✗
Château Grey	✗	✗	✗	✗	✗	—	●	✗	✗	✗	✗	●	●	✗	●	✗	●	✗	✗
Sandstone	✗	✗	✗	✗	✗	—	✗	●	✗	✗	✗	✗	✗	✗	✗	✗	✗	✗	✗
Quarry Grey (Environmental Green)	✗	✗	✗	✗	✗	—	□	□	□	□	□	□	□	□	□	□	□	□	□
Soft Vinyl																			
Sand	✗	✗	●	✗	✗	✗	✗	✗	✗	✗	✗	✗	✗	✗	✗	✗	✗	✗	✗
Rigid Feather Edge PVC																			
Stone	□	□	□	●	□	●	□	□	□	□	□	□	□	□	□	✗	□	□	✗
Grey	●	□	□	□	●	□	□	□	□	□	□	□	□	□	□	✗	□	□	✗
Environmental Green	□	□	□	□	□	□	□	□	□	□	□	□	□	□	□	✗	□	□	✗
Canexel																			
Mist Grey	□	□	□	□	□	□	□	□	□	□	□	□	□	□	□	✗	□	□	✗
River Rock	□	□	□	□	□	□	□	□	□	□	□	□	□	□	□	✗	□	□	✗
Sand	□	□	□	□	□	□	□	□	□	□	□	□	□	□	□	✗	□	□	✗
Coastline	□	□	□	□	□	□	□	□	□	□	□	□	□	□	□	✗	□	□	✗
Sierra	□	□	□	□	□	□	□	□	□	□	□	□	□	□	□	✗	□	□	✗
Acadia (Environmental)	□	□	□	□	□	□	□	□	□	□	□	□	□	□	□	✗	□	□	✗

Please note that other colour options may be available – please confirm details with your supplier.

Please note that options incur extra cost – please confirm details with your supplier.

WITH AN ATLAS HOME,
YOUR LEISURE TIME
IS WORRY FREE





TOTAL PEACE OF MIND WITH A COMPREHENSIVE MANUFACTURERS WARRANTY

Every Atlas holiday home is manufactured to the highest possible standard. We pride ourselves on delivering first-class products and a first-class service backed up by a comprehensive multi-year warranty.

Our holiday homes and lodges are built to last, but we know that sometimes things can go wrong, defects arise or components fail. With all Atlas holiday homes, you can relax in the knowledge that in the unlikely event of one of these occurring, our warranty is there to protect you.



All brand new holiday homes and lodges come with a 12 month parts and labour warrant covering everything inside your new purchase.



In addition to the standard 12 month warranty, the following are covered for 2 additional years.

- Furniture manufactured and fitted by Atlas
- Shower cubicle, baths, kitchen sink, taps and sanitaryware.
- Internal doors, door handles and radiators, sockets and switches.
- Gutters, downpipes and cladding
- Dining table and chairs



After the 12 month standard parts and labour warranty, the chassis, roof, walls, floors, ceilings and external doors and windows are covered for an additional 48 months.



If you have chosen one of our models with a fully galvanised chassis then you benefit from a 10 year warranty from the date of purchase.

Terms and conditions apply. See the handbook supplied with your holiday home or lodge for details.



Ultrawarm is a combination of high performance insulating materials and construction methods developed by Atlas in partnership with our insulation suppliers. Ultrawarm will further enhance the thermal properties of your Atlas leisure home reducing heating costs and keeping it warmer for longer, ensuring comfort in all weather conditions.

Available as an option on 2020 models, the Ultrawarm insulation package consists of:

- 150mm 'Smart Cavity' roof system including mineral wool and reflective insulating foil (200mm 'Smart Cavity' roof on Ovation Lodge 4, Azalea Lodge 2 and Lilac Lodge 10).
- 50mm 'Smart Cavity' exterior wall system including high performance reflective foil faced rigid PUR foam (65mm 'Smart Cavity' exterior wall on Ovation Lodge 4 and Azalea Lodge 2, 100mm 'Smart Cavity' exterior wall on Lilac Lodge 10).
- 60mm mineral wool floor insulation in Ultrawarm floors (90mm 'Smart Cavity' floor system including high performance reflective foil faced rigid PIR foam on Azalea Lodge 2).

Performance Increase (Typical)	Mirage	Amethyst 3
Standard insulation average 'U' value	1.21 W/m ² k	1.25W/m ² k
Extra insulation average 'U' value*	0.82 W/m ² k	0.83 W/m ² k
Extra insulation % improvement on standard insulation	32.2%	33.6%
Ultrawarm insulation average 'U' value**	0.59 W/m ² k	0.60 W/m ² k
Ultrawarm % improvement on standard insulation	51.2%	52.0%

* Calculations based on a leisure home with Extra insulation and standard air filled double glazing.

** Calculations based on a leisure home with Ultrawarm insulation and standard air filled double glazing.

A 'Low E', energy efficient glass upgrade is available which will further enhance thermal performance.

An Argon filled, 'Low E' energy efficient glass upgrade is available which will further enhance thermal performance, please contact Atlas for further details.

U Values and W/m²k

What are 'U' values and what does W/m²k mean?

A 'U' value is a measure of heat loss. It is expressed in W/m²k, and shows the amount of heat lost in watts (W) per square metre (m²) of material (for example wall, roof, floor etc.) when the outside temperature, measured in degrees Kelvin (K), is at least one degree lower.

The lower the 'U' value, the better the insulation, keeping your Atlas holiday home warmer for longer and making it cheaper to run.



Low 'E' Energy Saving Glass

Low 'E' (or low emissivity), Energy Saving Glass is different from normal glass because it has a micro thin transparent metallic coating on one side which is almost invisible.

Low 'E', Energy Saving Glass works by reducing the amount of heat lost through glass by reflecting it back into the room rather than allowing it to escape through the glass.

Argon

Standard double glazing uses two panels of glass fixed a distance apart, this distance or airgap has an insulating effect by reducing the amount of heat that can escape from or the amount of cold that can enter your Leisure Home.

Filling the space with Argon gas will make it even more difficult for heat to escape making the double glazed panel significantly more thermally efficient.

Trace Heating

Available as an option on all 2020 models, Trace Heating is a heating cable fitted inside the external pipe insulation and activates when the temperature falls below 5°Ct.

Trace Heating can operate in conditions down to -20°Ct helping to safeguard your holiday home against damage caused by freezing pipes. Trace Heating cannot overheat, is maintenance free and has very low running costs.

Note: Trace Heating requires a continuous power supply, check with your Park Operator to ensure electricity will be available over winter periods and when your Park is closed.

** Manufacturers figures and recommendations.*

BS3632:2015 Residential Specification

The following Atlas Leisure Homes models can be constructed to meet the current BS3632:2015 Standard

Ovation Lodge 4	43' x 13' – 2 bedroom
Lilac Lodge 10	All of range*
Laburnum Lodge 3	40' x 20' – 2 bedroom

Sherwood Lodge 5, Azalea Lodge 2 and Debonair Lodge 2 are built to BS3632:2015 Residential Specification as standard.

**An upgraded exterior is required with selected BS3632:2015 option.*

ATLAS MAIN DEALERS

1 Scotland

Please see our website for a large selection of holiday home parks across Scotland stocking selected Atlas models.

2 North West

Lake Coast and Dale

Scotland Rd, Carnforth, Lancashire, LA5 9RF
Tel: 01524 727950
lakecoastanddale.co.uk

New Statics for Sale

Southport New Road, Banks, Southport, Lancashire, PR9 8DF
Tel: 01704 215430
newstaticsforsale.co.uk

3 North East

Bridlington Caravan Centre

Bessingby Way, Bridlington, East Riding of Yorkshire, YO16 4SJ
Tel: 01262 606777
bridlingtoncaravans.com

New Statics for Sale

Percy Wood Golf and Country Retreat, Chesterhill, Swarland, Morpeth, NE65 9BB
Tel: 01670 787649
newstaticsforsale.co.uk

The Holiday Home Centre

Beverley Road, Beeford, East Riding of Yorkshire, YO25 8AD
Tel: 01262 81210
theholidayhomecentre.com

Yorkshire Holiday Homes

Unit 154, Thorp Arch Estate, Wetherby, West Yorkshire, LS23 7BJ
Tel: 01937 849128
bridlingtoncaravans.com

4 Central England

Salop Leisure

Emstrey, Shrewsbury, Shropshire, SY5 6QS
Tel: 01743 617607
salopleisure.co.uk

Salop Leisure Ltd

Nelson Road, Sandy Lane Industrial Estate, Stourport on Severn, Worcestershire, DY13 9QB
Tel: 0844 2471836
salopleisure.co.uk

5 East of England

The Leisure Company (UK) Ltd

The Static Caravan Centre Sea Lane, Ingoldmells PE25 1PG
Tel: 01754 875050
theleisurecompany.co.uk

McDonnell Caravans

Lynn Rd, King's Lynn, Gayton, Norfolk, PE32 1QJ
Tel: 01553 636243
mcdonnellcaravans.co.uk

Pioneer Caravans

Thorney Rd, Peterborough, Cambridgeshire, PE6 7UB
Tel: 01733 222244
pioneercaravans.co.uk

Parklands Leisure

4 Maryland, Wells-next-the-Sea, Norfolk, NR23 1LY
Tel: 01328 710166
parklands-leisure.com

UK Caravan Centre

2 The Gatehouse, Billericay, Essex, CM12 9SB
Tel: 0800 246 1206
ukcaravancentre.co.uk

6 South West

Surf Bay Leisure – Devon

The Airfield, Winkleigh, Devon, EX19 8DW
Tel: 01837 68010
surfbayleisure.co.uk

Surf Bay Leisure – Dorset

St Andrews Industrial Estate, Shoe Lane, Bridport, Dorset, DT6 3EX
Tel: 01308 427444
surfbayleisure.co.uk

Surf Bay Leisure – Somerset

Weston Road, Brean, Somerset, TA8 2RP
Tel: 01278 751171
surfbayleisure.co.uk

7 South East

Keat Farm (Caravans) Ltd,

Reculver Road, Herne Bay, Kent, CT6 6SR
Tel: 01227 374381
keatfarm.co.uk

PM Leisure Ltd

18–25 Nutbourne Rd, Hayling Island, Hampshire, PO11 9RU
Tel: 023 9246 7722
pmleisure.co.uk

8 North Wales

Lloyds Caravan Sales

Pensarn, Abergele, Conwy, LL22 7PW
Tel: 01745 832050
lloydscaravans.co.uk

Lloyds Caravan Sales

Main Coast Road, Talacre, Flintshire, CH8 9JY
Tel: 01745 560224
lloydscaravans.co.uk

Mon Caravans

Amlwch, Anglesey, LL68 9TG
Tel: 01407 831138
moncaravans.com

Mon Caravans

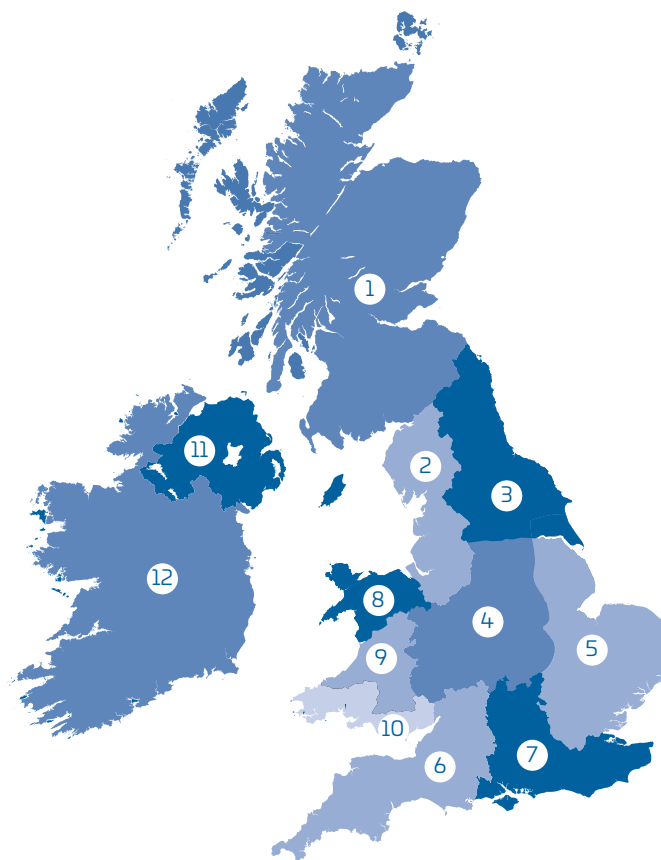
Caergeillig, Anglesey, LL65 4YH
Tel: 01407 742288
moncaravans.com

Mon Caravans

Menai Bridge, Anglesey, LL59 5RW
Tel: 01248 711070
moncaravans.com

Roy Kellets

Towyn Road, Towyn, Abergele, Clwyd, LL22 9NW
Tel: 01745 350043
roykellettcaravans.com



9 Mid Wales

Salop Leisure Ltd

Treowain Enterprise Park, Machynlleth, SY20 8EG
Tel: 0844 2471841
salopleisure.co.uk

10 South Wales

Broughton Leisure

Yerbeston Gate, Narberth, Pembrokeshire SA68 0NY
Tel: 01834 891444
broughtonleisure.co.uk

11 Northern Ireland

Sandycove Holiday Homes

191 Whitechurch Rd, Ballywalter, Newtownards, Ards, BT22 2JZ
Tel: 028 4275 8200
sandycove.co.uk

12 Ireland

Cunninghams

Ennis Road, Limerick, Ireland
Tel: 00 353 61 451 009
cunninghams.ie

Johnstons Caravans

Dromore, Letterkenny, Co. Donegal, Ireland
Tel: 00 353 74 912 2496
johnstonscaravans.ie

Smyth Leisure

Moneycarroll, Newtownmountkennedy, Co. Wicklow, Ireland
A63 WP94
Tel: 00 353 12 011 095
smythleisure.com

Please see our website for a large selection of holiday home parks that we distribute to throughout the UK and Europe.

CREATING LASTING MEMORIES AND UNFORGETTABLE EXPERIENCES

Atlas reserves the right to change any materials, fittings, etc., shown in this brochure at any time and without prior notice as supply or product development demand. All Atlas Leisure Homes are built to comply with all relevant British Standards and Codes of Practice as required by the National Caravan Council certification scheme.

NOTE: Caravan Holiday Homes are not designed for residential occupancy. To use an Atlas Leisure Home, it will need to be correctly sited, have steps or other means of entry and be connected to services (an appropriate propane gas supply, mains electricity to suit the required power offtake, mains water at a pressure to suit the appliances and a waste water/sewage outlet). Due to the nature of our construction methods and practices, it may not always be possible to match patterns precisely on some wallboards and fabrics. Any Park Operator, anywhere in the UK, can purchase an Atlas Leisure Home for you through the Atlas Dealer/Park Distribution Network. Due to the limitation of the print process we recommend that you see the actual products for colours. Photographs of Atlas Leisure Homes on location are for example only and may not have been sited at that location. Decking, patios, fences, barbecues, etc. have been used for illustrative purposes only. E&OE.

If you invest in an ATLAS Leisure Home, you can be confident that not only do you own the best in design, innovation and value for money but have also made a contribution to environmental sustainability.

V1/0919/7K



ncc



Your ATLAS Stockist

ATLAS
LEISURE HOMES

Atlas Leisure Homes Limited

Wiltshire Road,

Hull HU4 6PD

Tel: 01482 562101

Fax: 01482 566033

atlasleisurehomes.co.uk